



# Evaluation Report 2007/08

minicucci | associates



# Evaluation

---

- First 5 funded programs 2007/08 summary
- Children's Report Card Community Indicator Highlights
- Program Outcomes
  - Healthy Smiles evaluation
  - Cross program parent survey
  - Raising A Reader pre/post survey findings



# Focus Areas First 5 Plumas

---

- Children are healthy
- Families are strong
- Children are ready for school and the community and schools are ready for children
- Systems are integrated

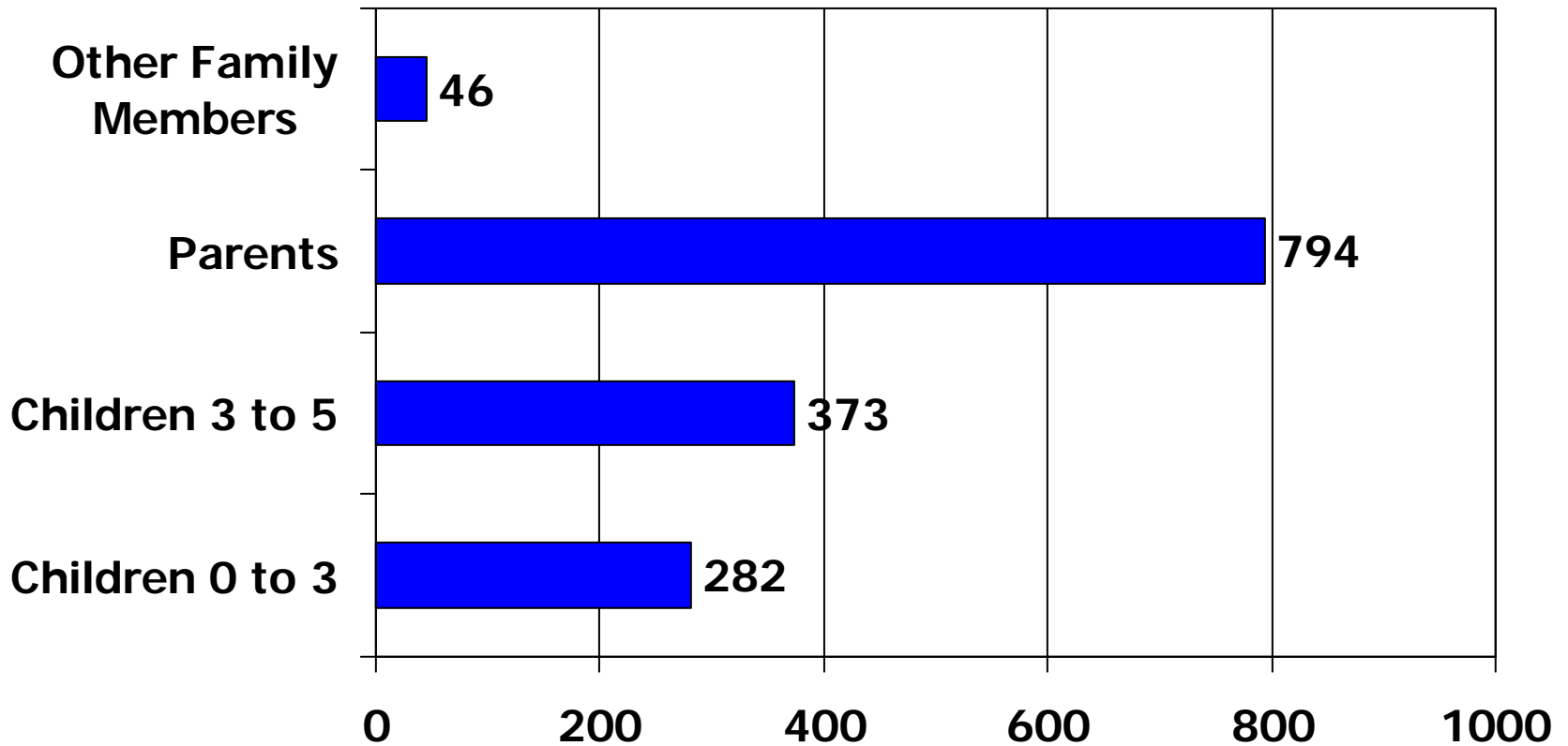


# First 5 Funded Programs

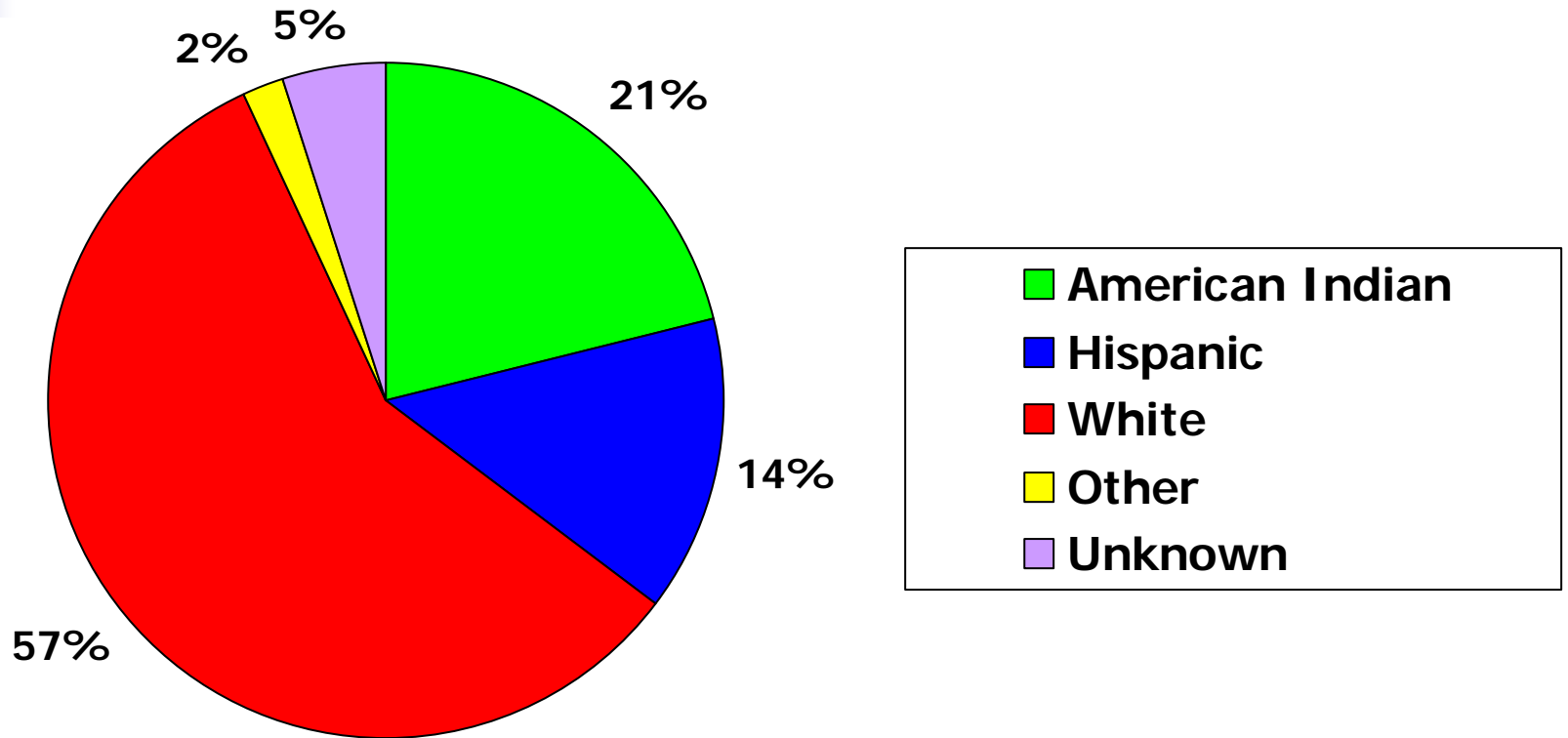
---

- New Born House Calls
- Healthy Touch Infant Massage Program
- Early Intervention Program/PUSD
- Roundhouse Council Family Advocate
- Healthy Smiles: Children's Oral Health
- CARES: stipends for child care providers for professional development

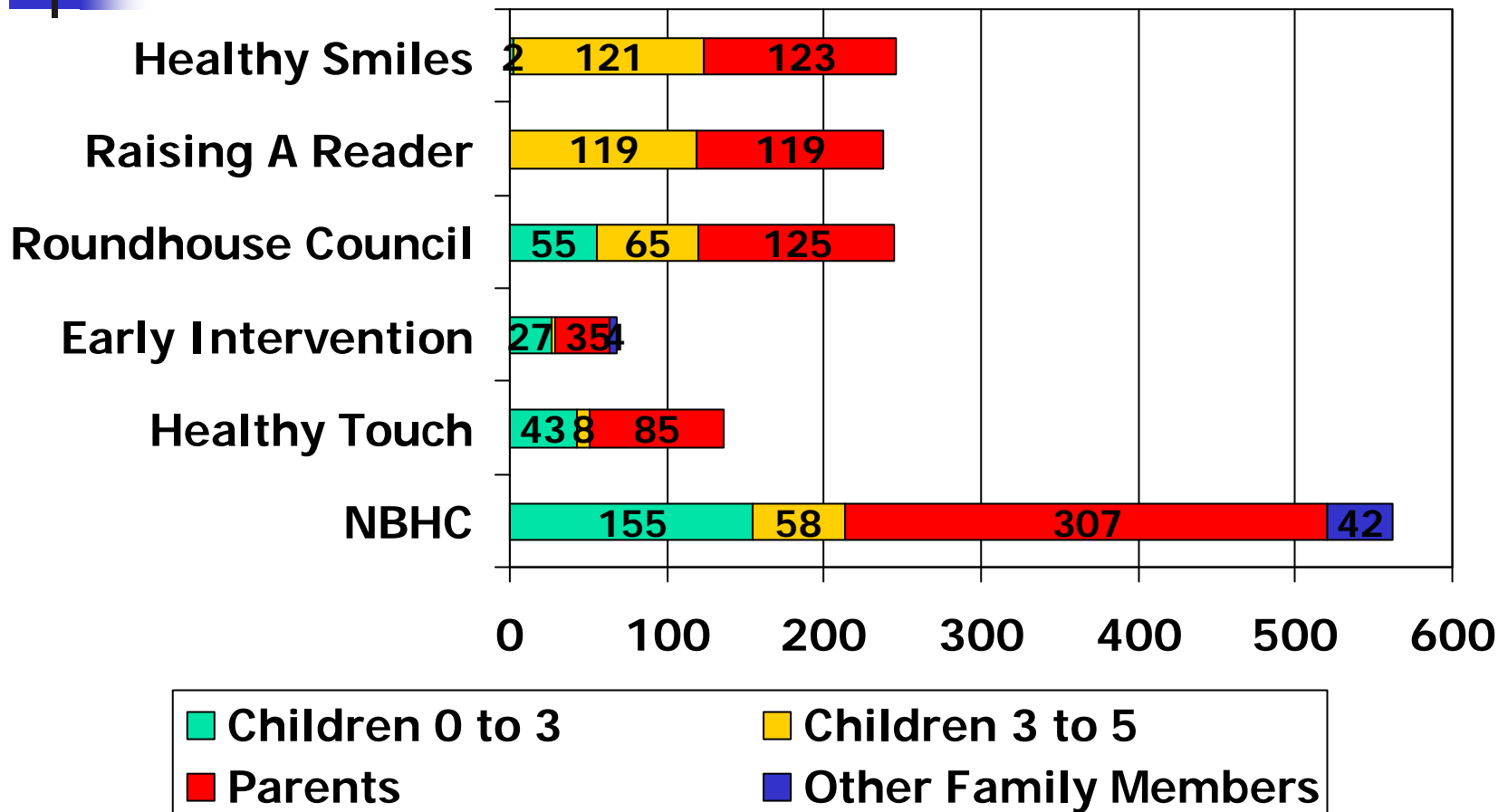
# Count of Total Children/Parents Served 2007/08



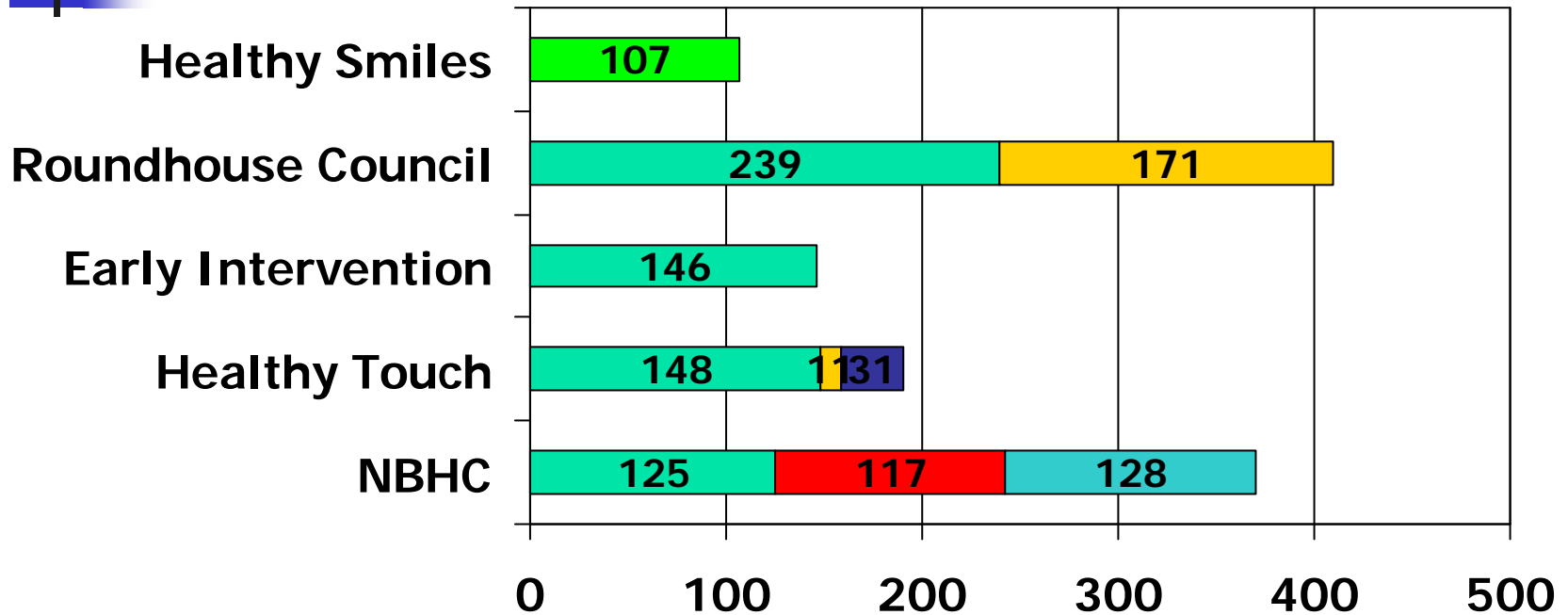
# Ethnicity of Total Children Served 2007/08



# Details on Children and Parents Served By Program 2007/08



# Services Provided By Program 2007/08







# CARES

---

- Stipend recipients 32 in 2007/08 program year
- Professional training opportunities:
  - Feather River College partners with Plumas Rural Services and Birth Partners to deliver provider-specific training
  - Self-study kit opportunity for units PRS Child Care Resource and Referral Agency
- 36 new Child development permit applications 2004 through 2007



# Evaluation 2007/08

---

- Using Achievement Milestones feature in state data system for quarterly progress reports
- Eliminated record keeping and burden of PEDS core data
- Cross program parent survey
- Special study on Healthy Smiles
- State streamlined its annual report process



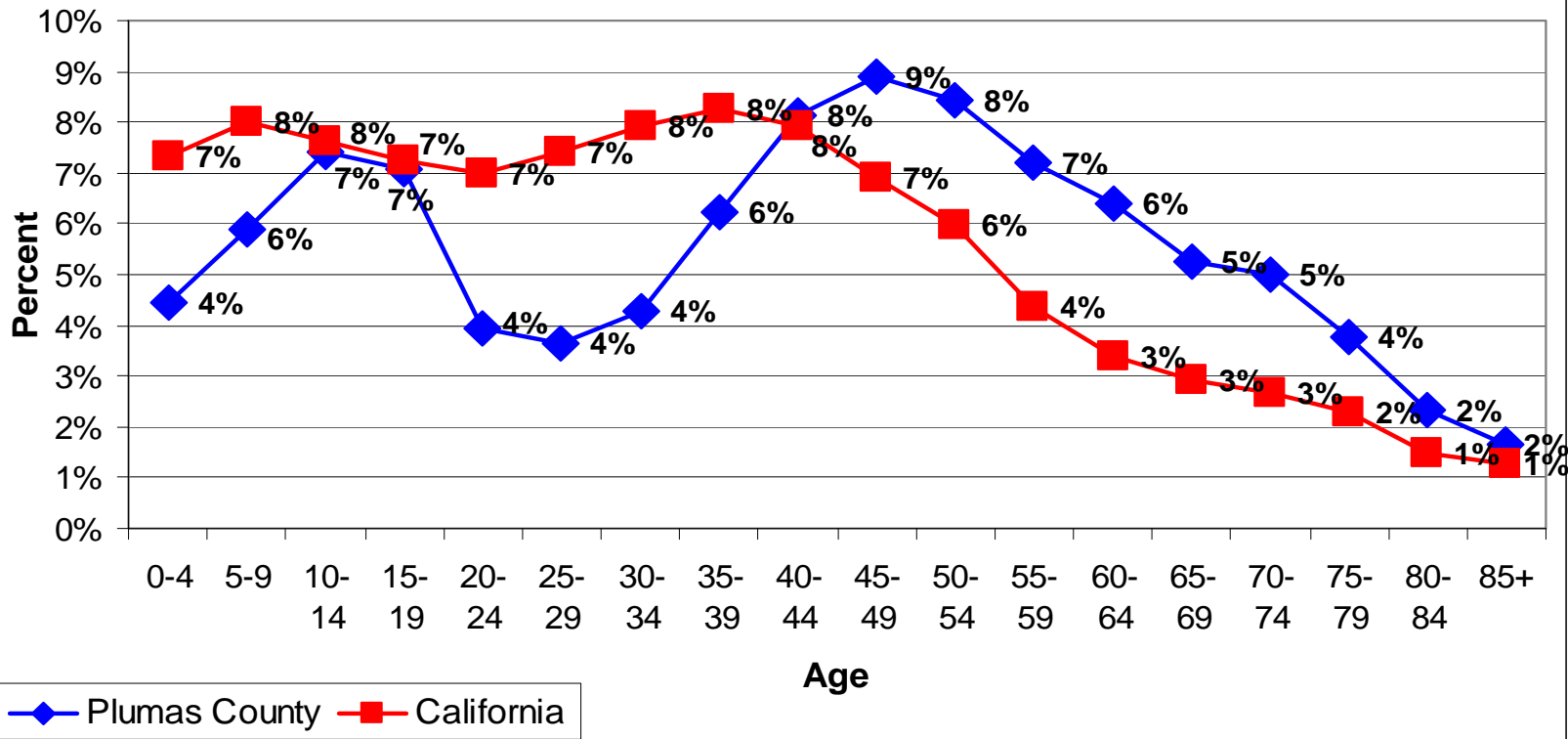
# Children's Report Card Highlights

---

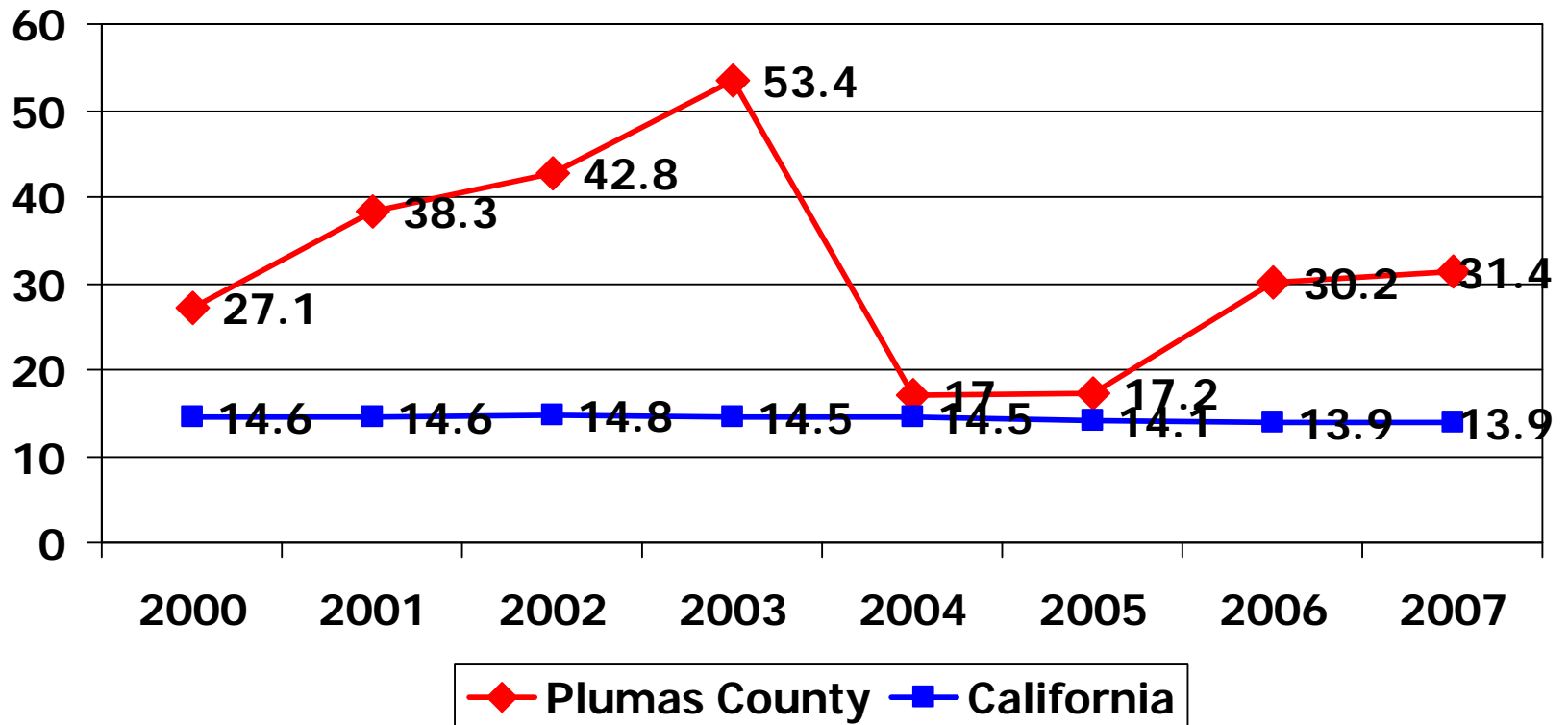
- Population of Plumas County
- Strong Families
  - Rates of substantiated child abuse
  - Rates of children in foster care
- Healthy Children
  - Women starting prenatal care in first trimester
  - Low birth weight infants
  - Breastfeeding (any) at hospital discharge
- Child Development
  - Child care licensed slots

# Age Distribution of Plumas County compared to California

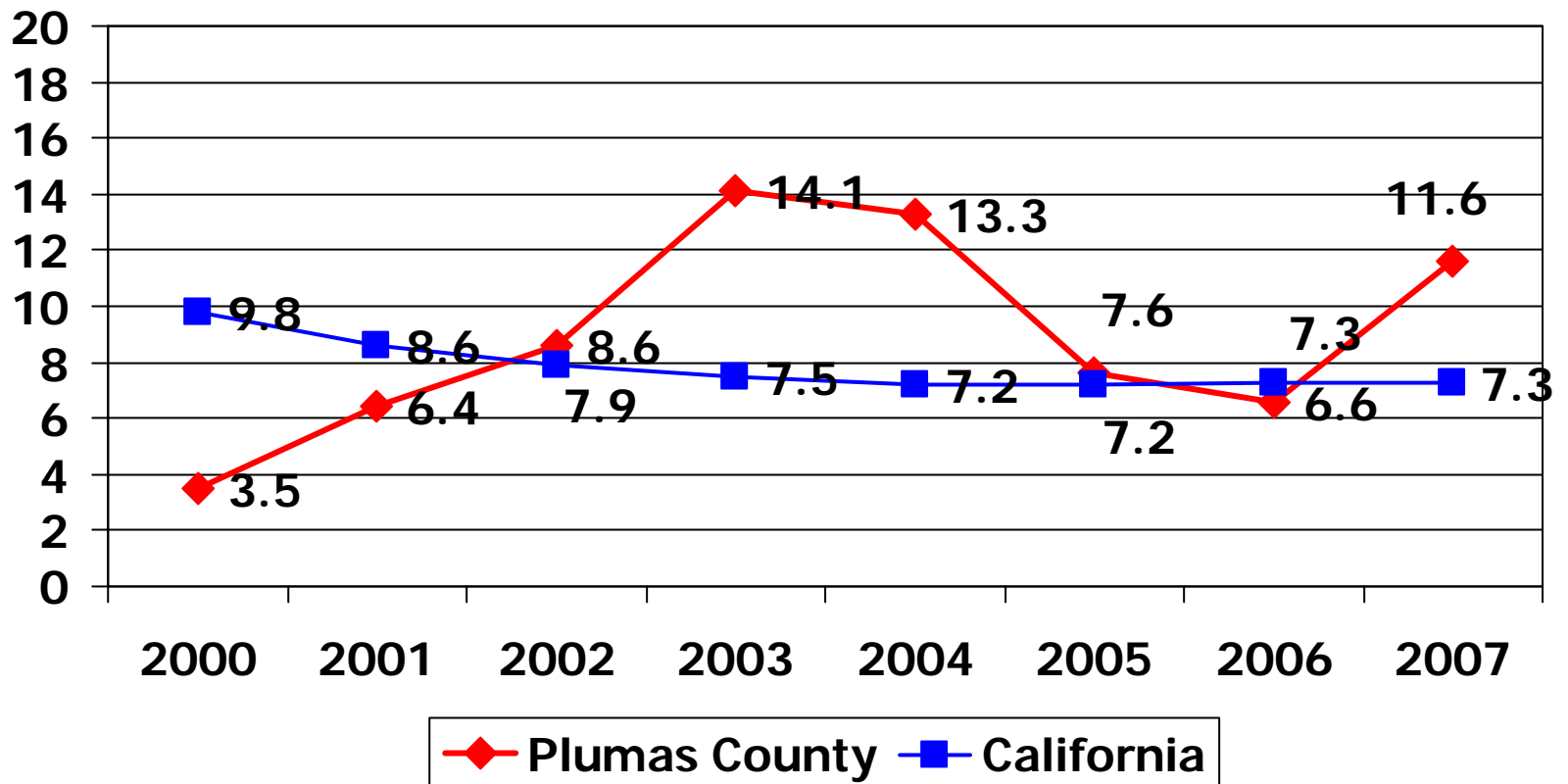
Age Distribution in 2000: Percent of Population



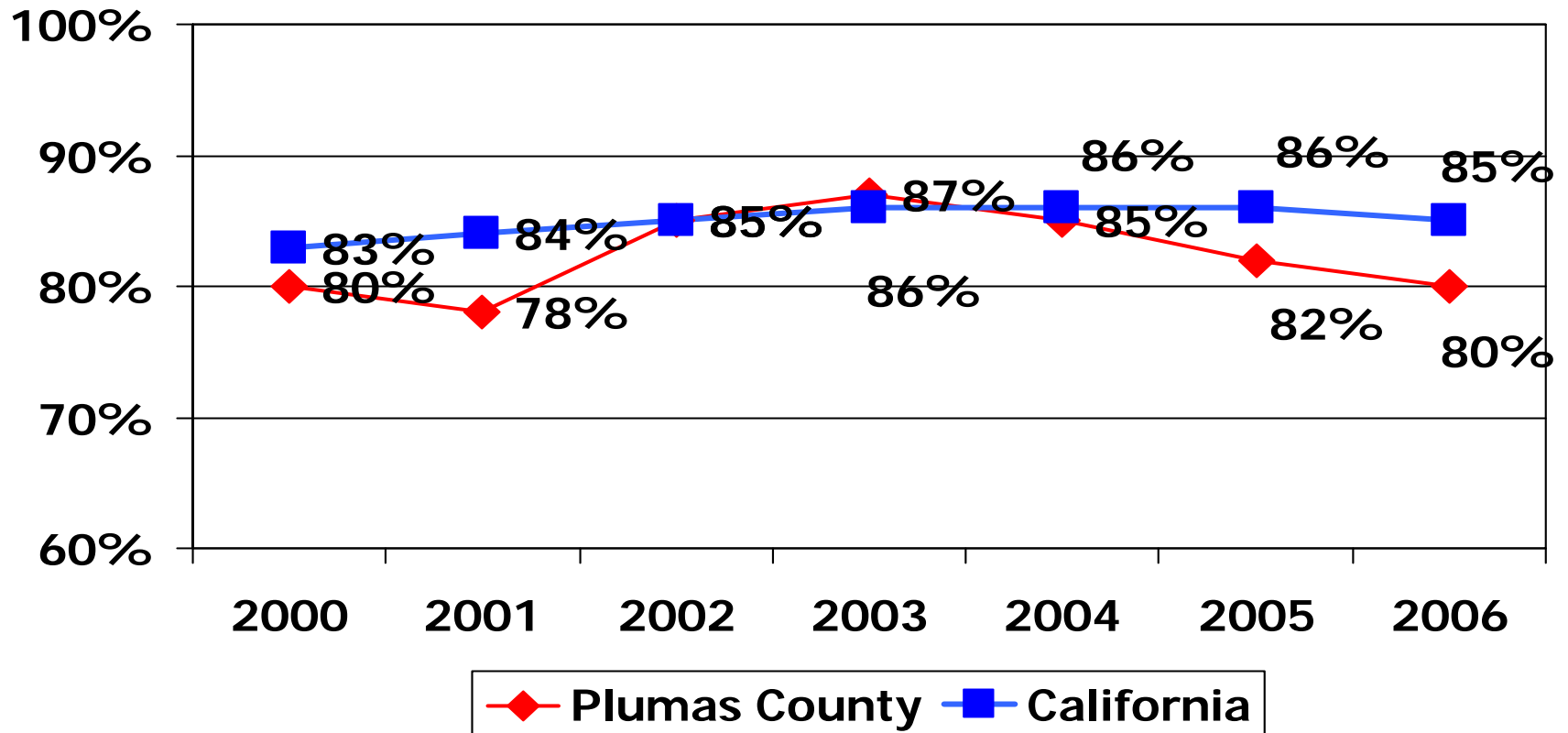
# Strong Families : Rates of Substantiated Abuse Children 0 to 5, Per 1,000 Children



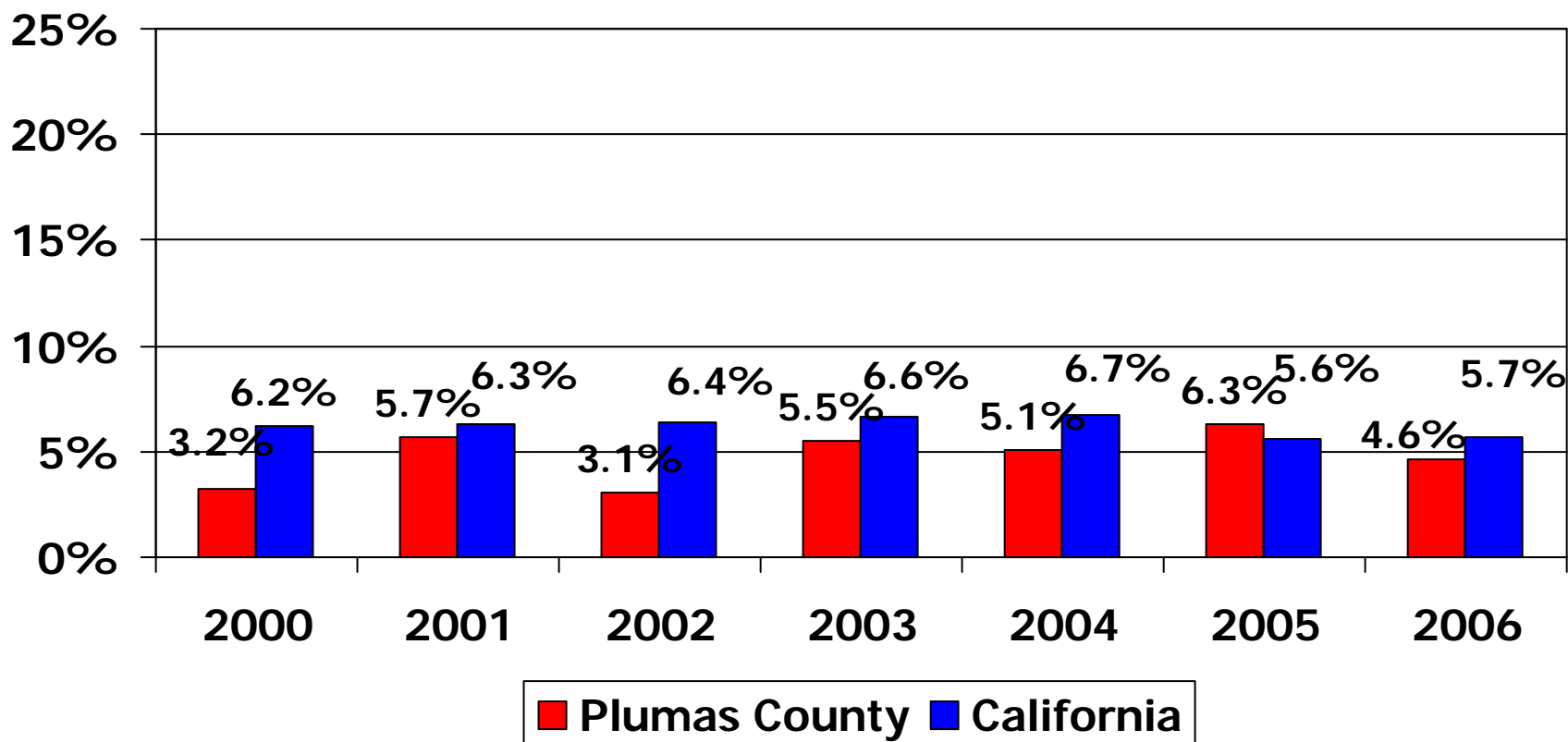
# Strong Families : Rates of Children 0 to 5 Rate in Foster Care Per 1,000 Children



# Healthy Children: Women Entering Prenatal Care in the First Trimester

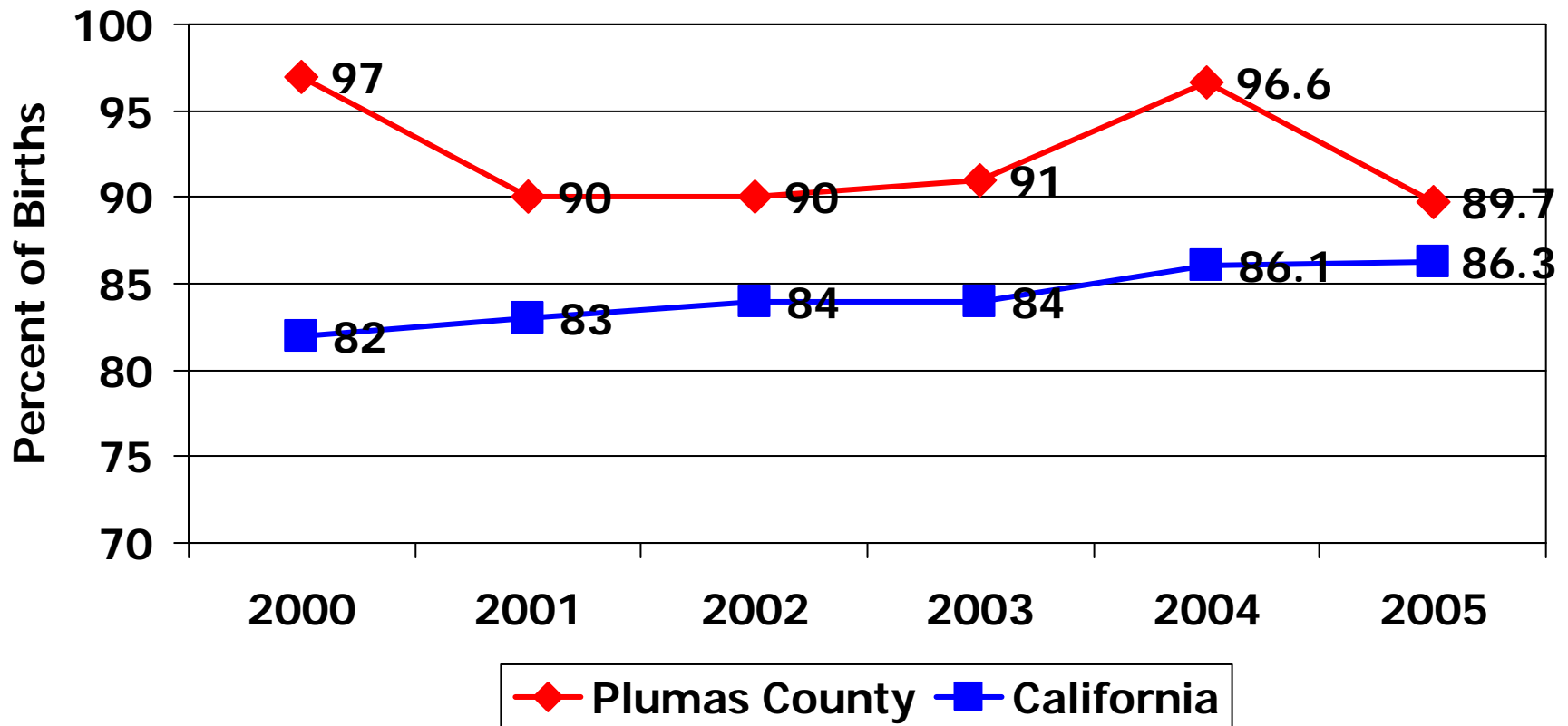


# Healthy Children: Percent of Births at Low Birth Weight

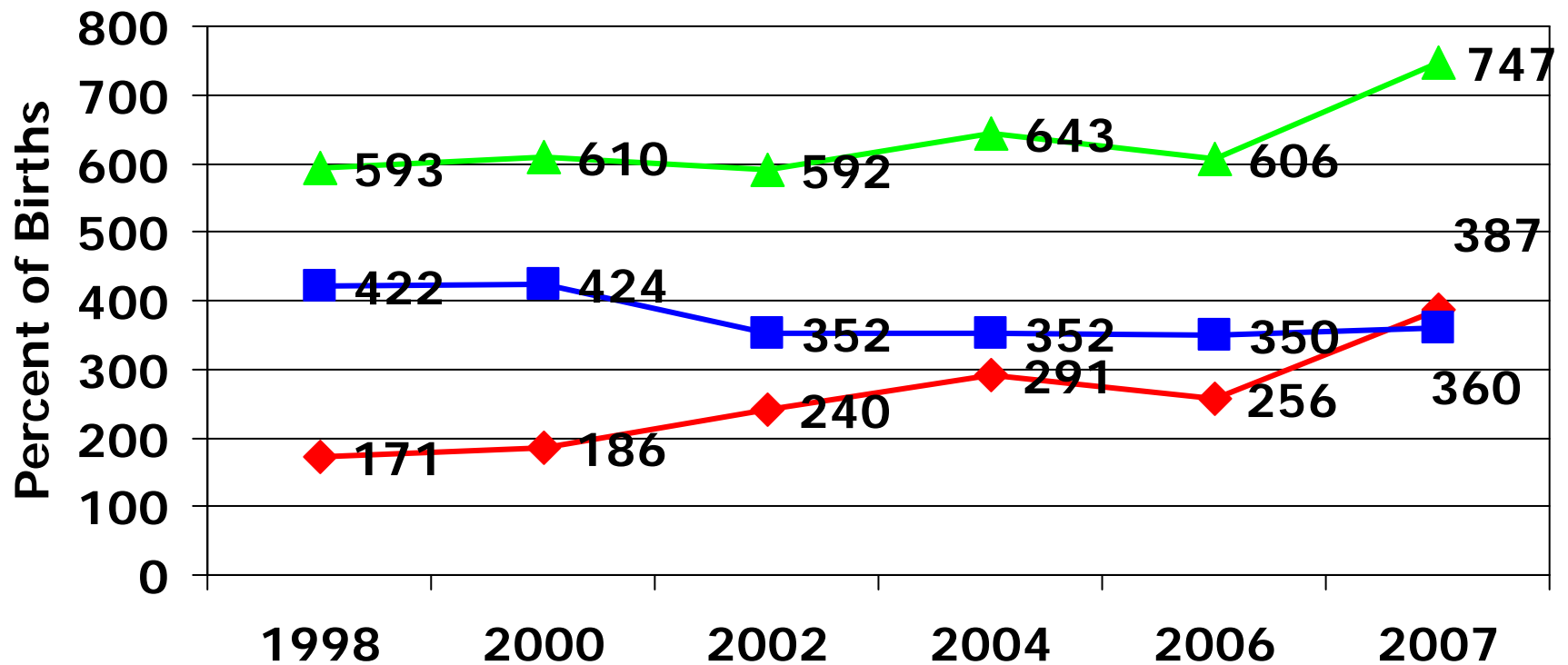




# Healthy Children: Breastfeeding at Hospital Discharge: Any Breastfeeding



# Child Development: Total Child Care Slots Available in Plumas County



◆ Child Care Center slots

■ Family Child Care Home slots

▲ Total



# First 5 Funded Programs

---

- Outcomes for 2007/08
  - Healthy Smiles
  - Cross program parent survey
  - Raising A Reader



# Healthy Smiles

---

- Funded by First 5 Plumas, First 5 Sierra and the California Endowment
- 2005/06 through 2007/08
- 2007/08 screened 123 children 0 to 5 in Plumas County
- Collaboration with Head Start, state preschools, and Family Resource Centers



# Healthy Smiles

---

- 2007/08 screenings of 0 to 5 year olds:
  - 9% serious decay
  - 11% moderate decay
  - 23% early decay
  - 57% no decay
  
- 25 children received intensive case management for dental care



# Healthy Smiles: Systems Change

---

- Oral Health Coalition
  - Policy Plumas District Hospital initiated dental check for all expectant mothers
  - FRC staff gained expertise in children's oral health care (education, outreach, case management and insurance enrollment)
  - Dentists networked for first time in project professional development



# Parent Survey

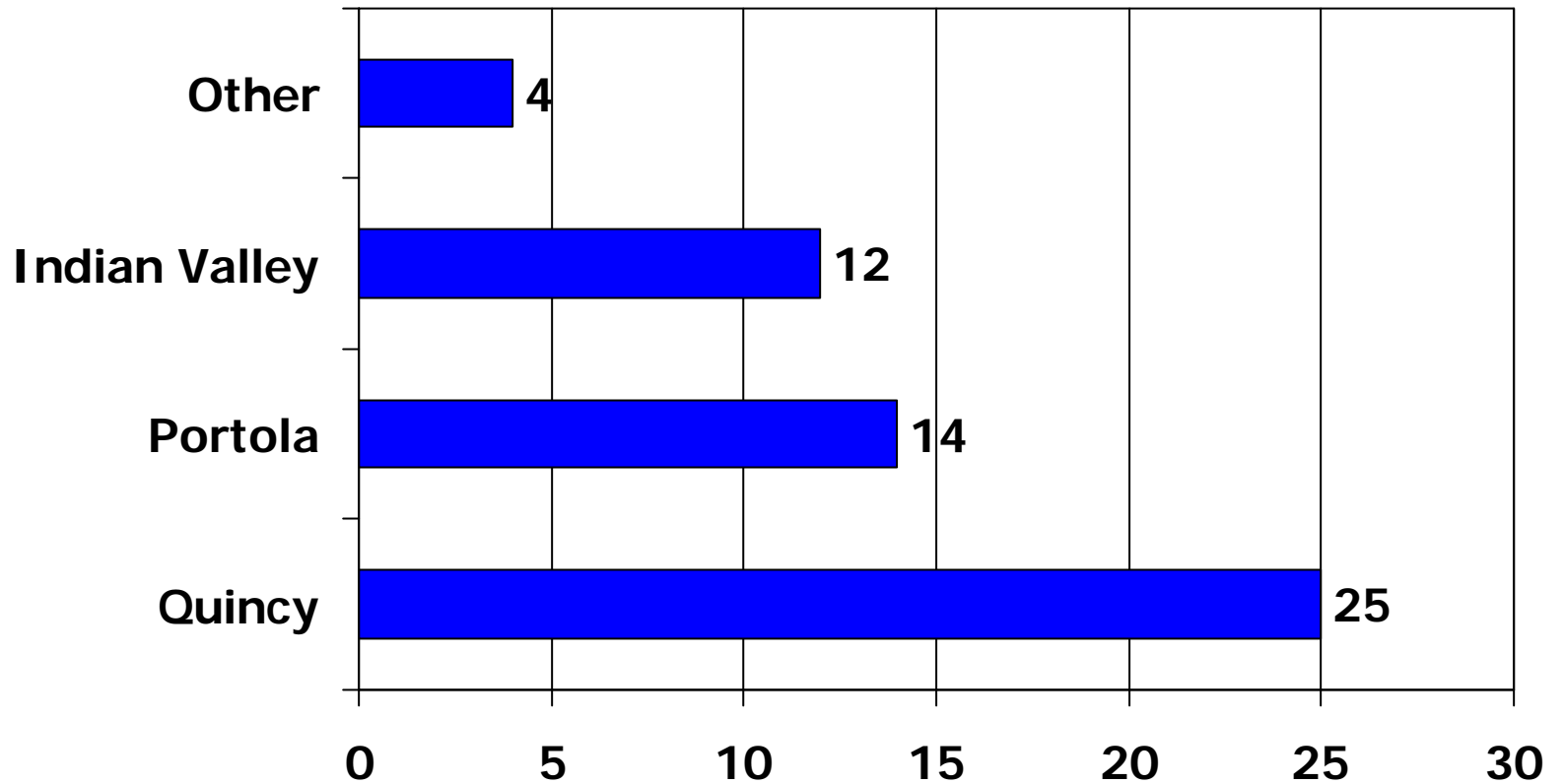
---

- Cross program: all First 5 funded programs administered the same survey to parents
- Conducted in April 2008
- 55 responses



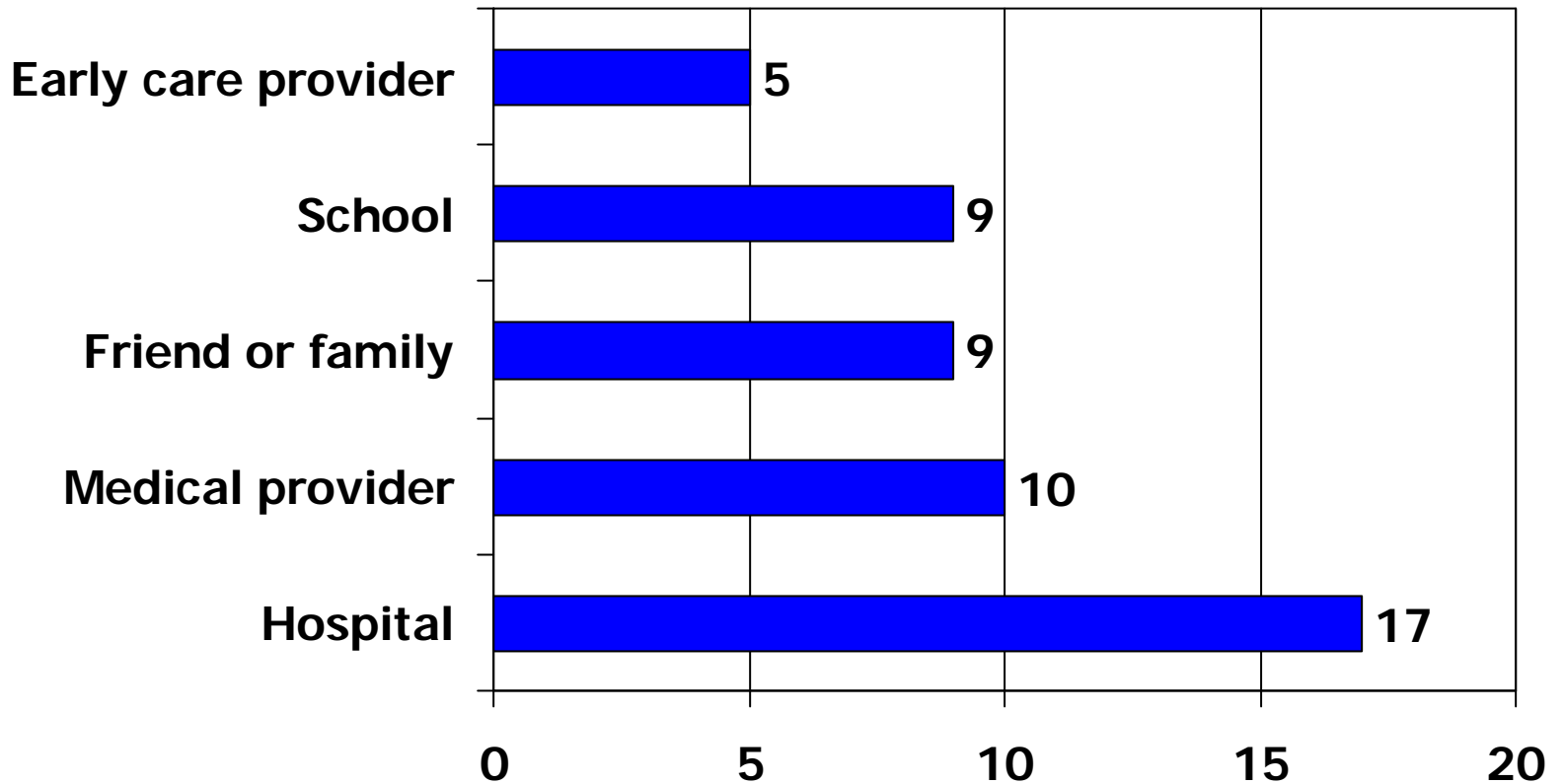
# Survey: Parents' Community

---





# Survey: How They Heard About the Program

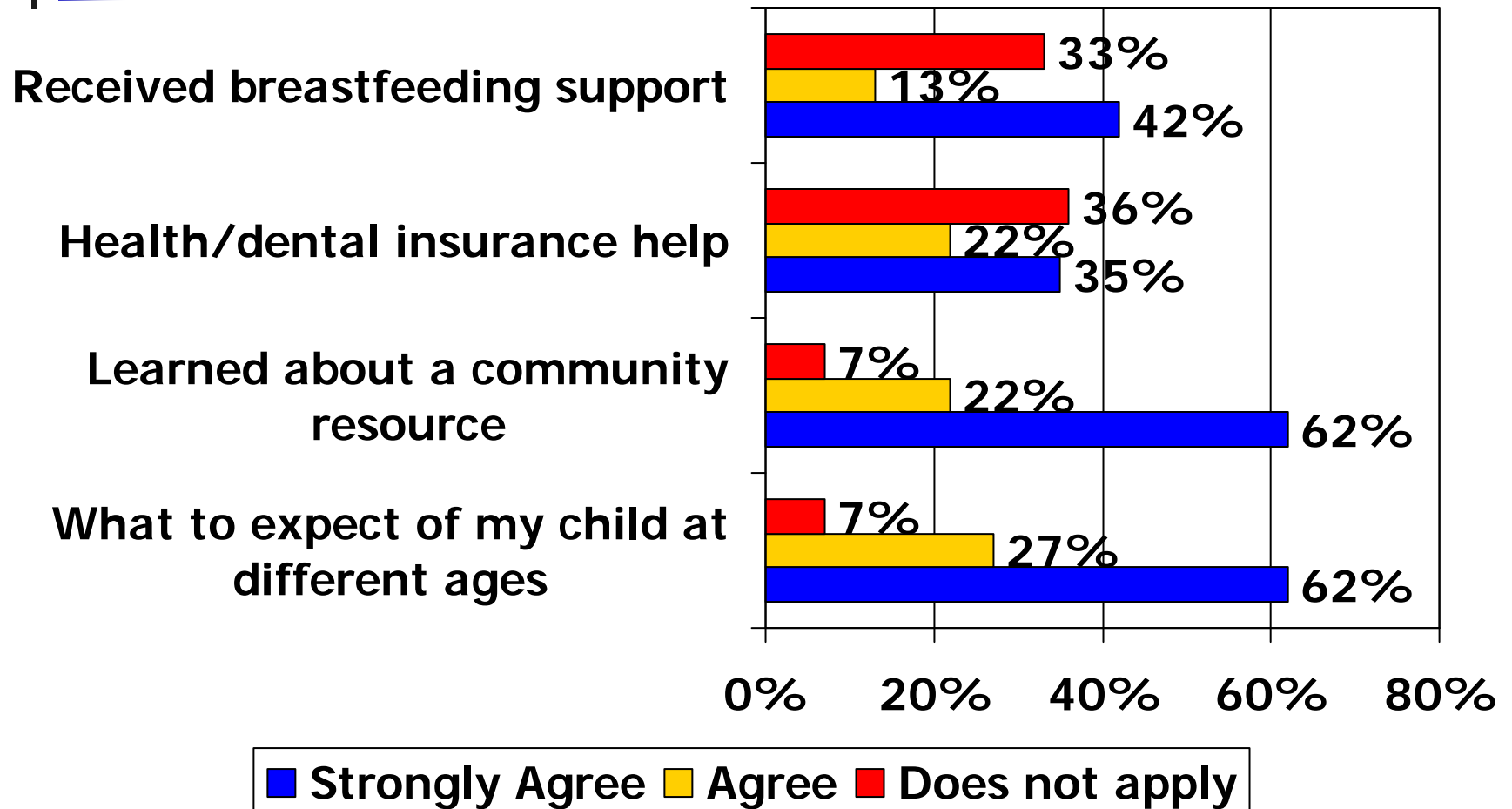




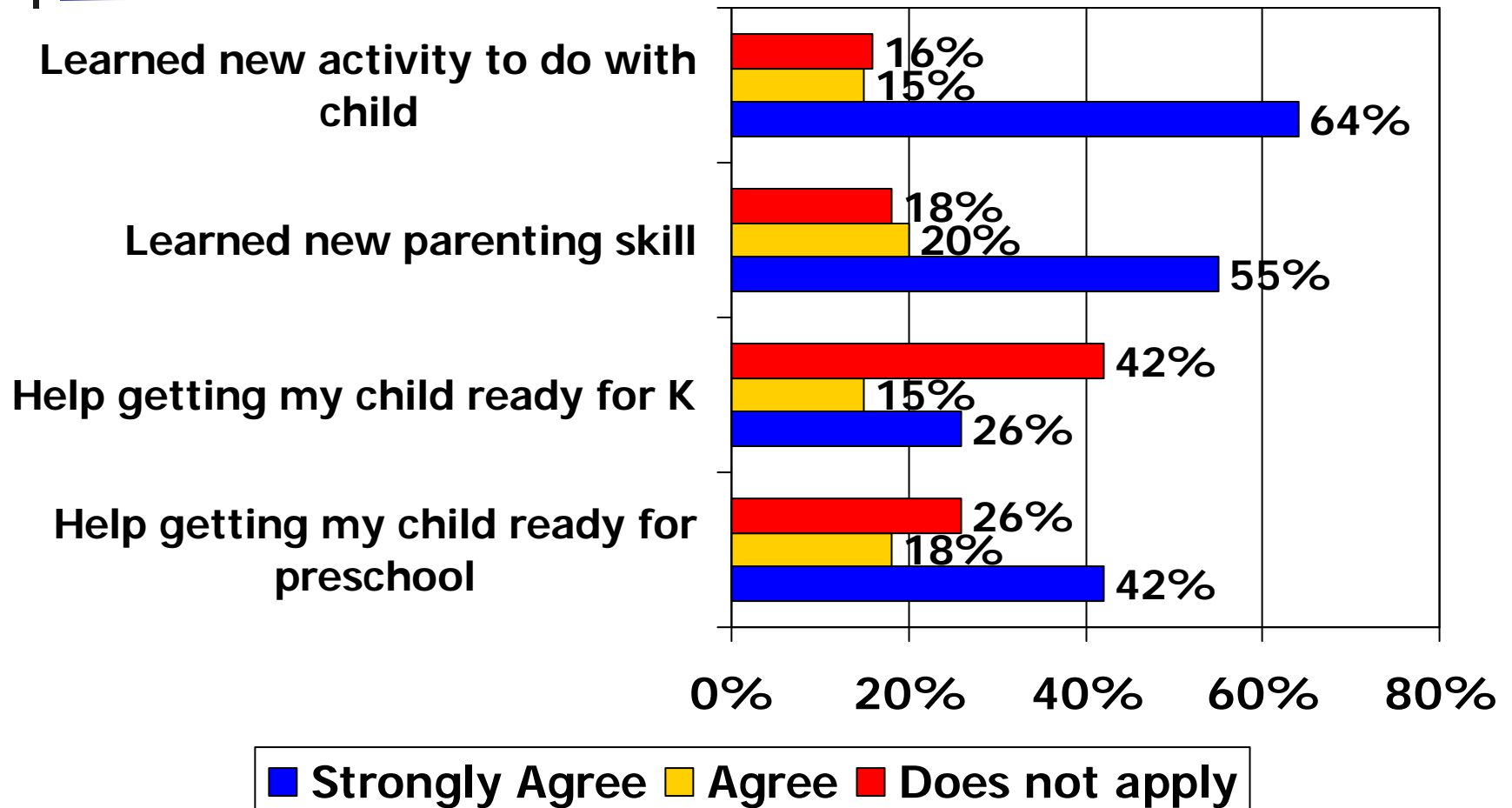
# Parents Participated in Multiple First 5 Programs

<b>Programs</b>	<b>Number of Respondents</b>
Healthy Touch and NBHC	12
Early intervention and Healthy Touch	5
Healthy Smiles and NBHC	16
Healthy Smiles and Roundhouse Council	5
Raising a Reader and NBHC	13
Raising a Reader and RHC	6
Kit for new parents and NBHC	24
Early Learning Kit and NBHC	18
Early Learning Kit and RHC	5

# Survey: Parents Responses



# Survey: Parents Responses





# Raising A Reader

---

- Integrated into home visitation and preschool programs
  - 15 children with Roundhouse Council participated
  - 25 children served by Early Intervention participated
- Books loaned to parents/children
- Library literacy events- 6
- Parent surveyed pre/post:
  - 77 Pre Surveys
  - 33 With Post Surveys



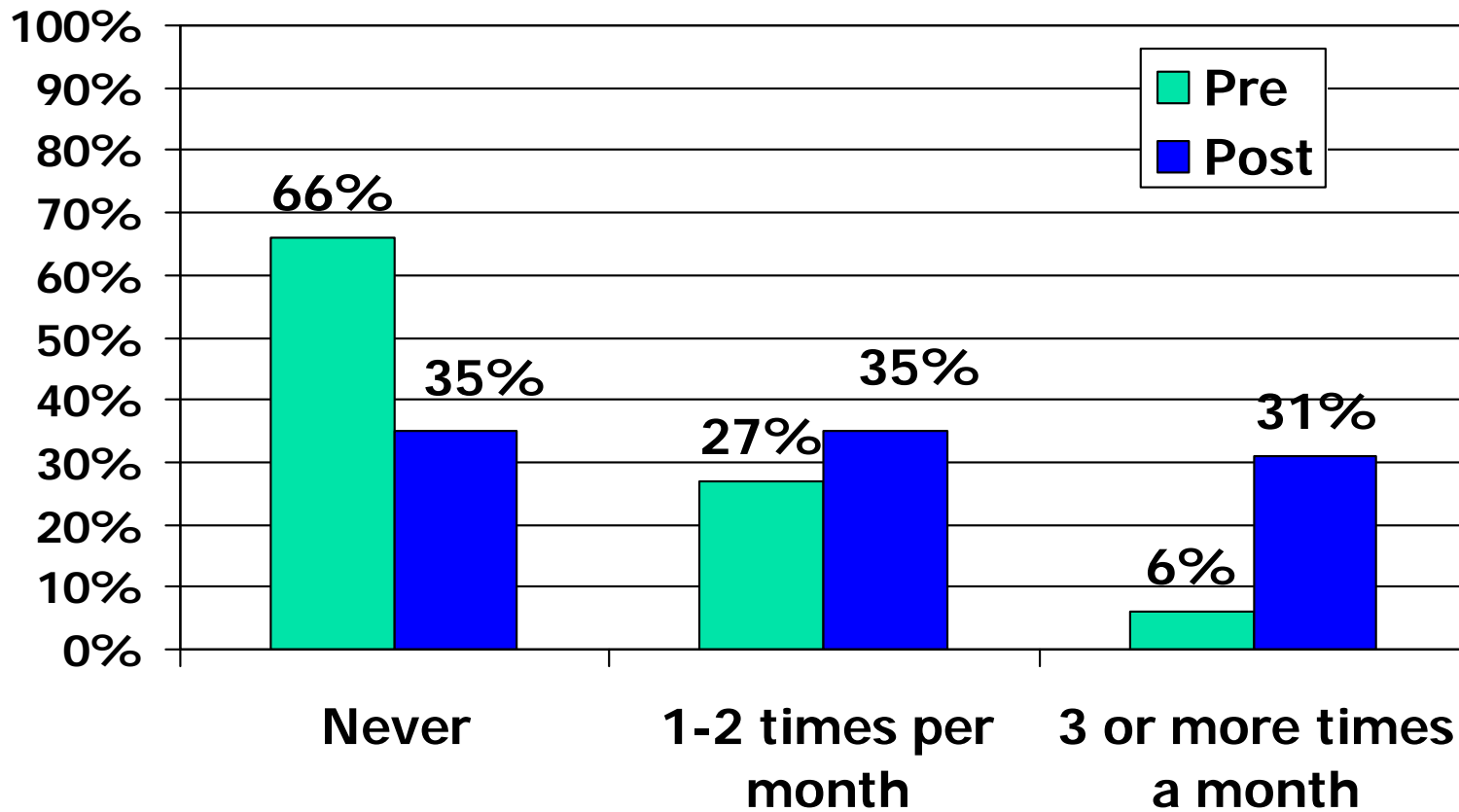
# Raising A Reader

---

- Features parents found most helpful
  - Books in the blue bag helping to keep a supply of books in the home 84%
  - Attending events at the library 75%
  - Having preschool teacher talk about Raising A Reader 72%

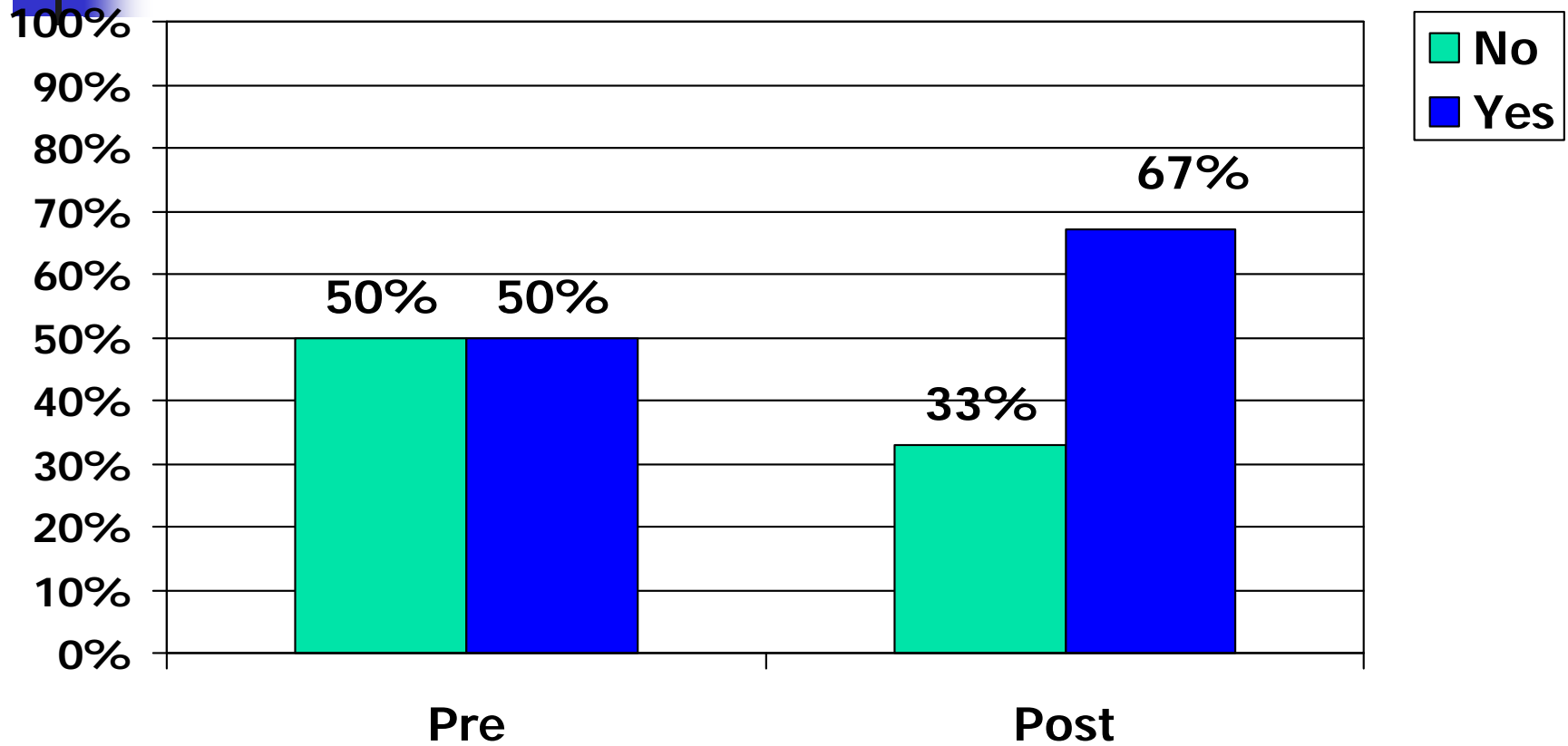
# Raising A Reader Parent Survey

## Use of the Library



# Raising A Reader Parent Survey

## Reading Routine At Home With Child







# Family Served By First 5 in 2007/08 Early Intervention

---

- The Challenge

- Mother with severe physical and mental health issues. Infant low muscle tone, losing weight, not responding to sound, at time of referral infant 10% on growth/development chart

- The Program

- New Born House Calls referred child at 3 months, infant received infant massage, pediatric nutrition, speech therapy, infant stimulation and family services



# Family Served By First 5 in 2007/08 Early Intervention

---

- The Response

- At 2 years 8 months the child is within normal limits. The child matches colors, counts, learned numbers and is using Raising A Reader with mother.
- Not expected to need special education in school



# Themes

---

- Funded programs conducting large number of home visits
- Cross program strategies successful
  - Raising A Reader
  - Parents As Teachers
  - Home Visiting Coalition
- Ending Healthy Smiles project