



# CHILDREN'S REPORT CARD

## COMMUNITY INDICATORS UPDATE 2008

Submitted by: Minicucci Associates  
1851 Heritage Lane Suite 183  
Sacramento, Ca 95815  
Telephone: (916) 920 7800 x 224  
Website: [www.minicucciassociates.com](http://www.minicucciassociates.com)  
Email: [minicucci@pacbell.net](mailto:minicucci@pacbell.net)

## COMMUNITY INDICATORS UPDATE 2008

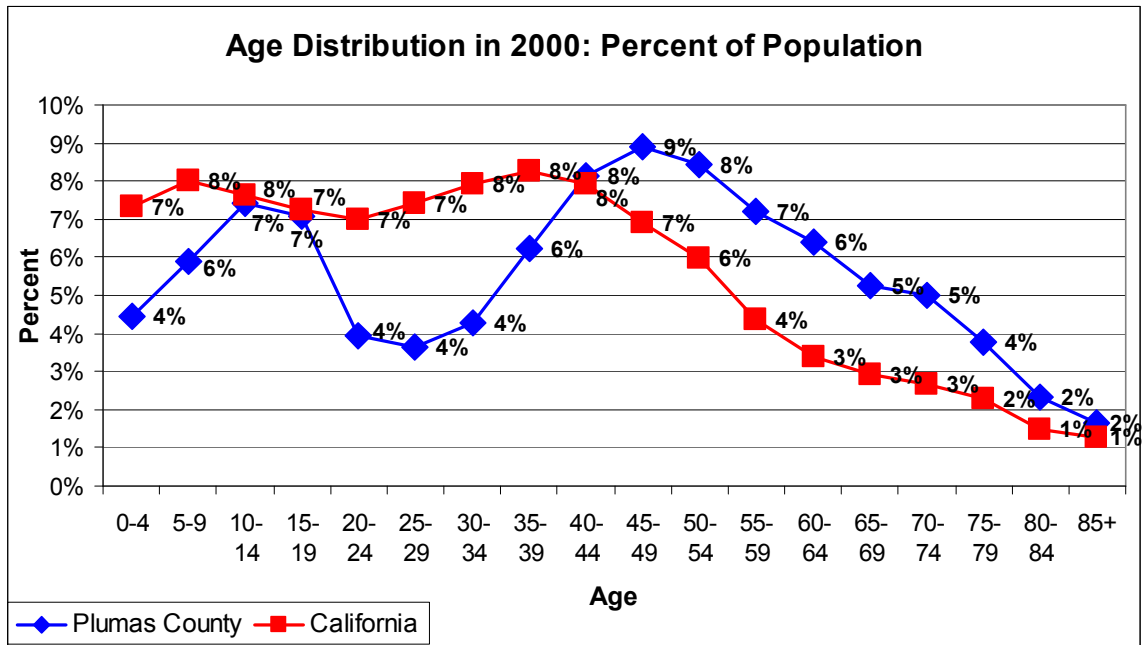
First 5 Plumas County monitors trends in community data in order to assess changes in the health and well being of children under 5 and their families. The information below is organized around the major goals of First 5:

- Strong Families – Improved Family Functioning
- Healthy Children – Improved Child Health
- Children Ready to Learn – Improved Child Development

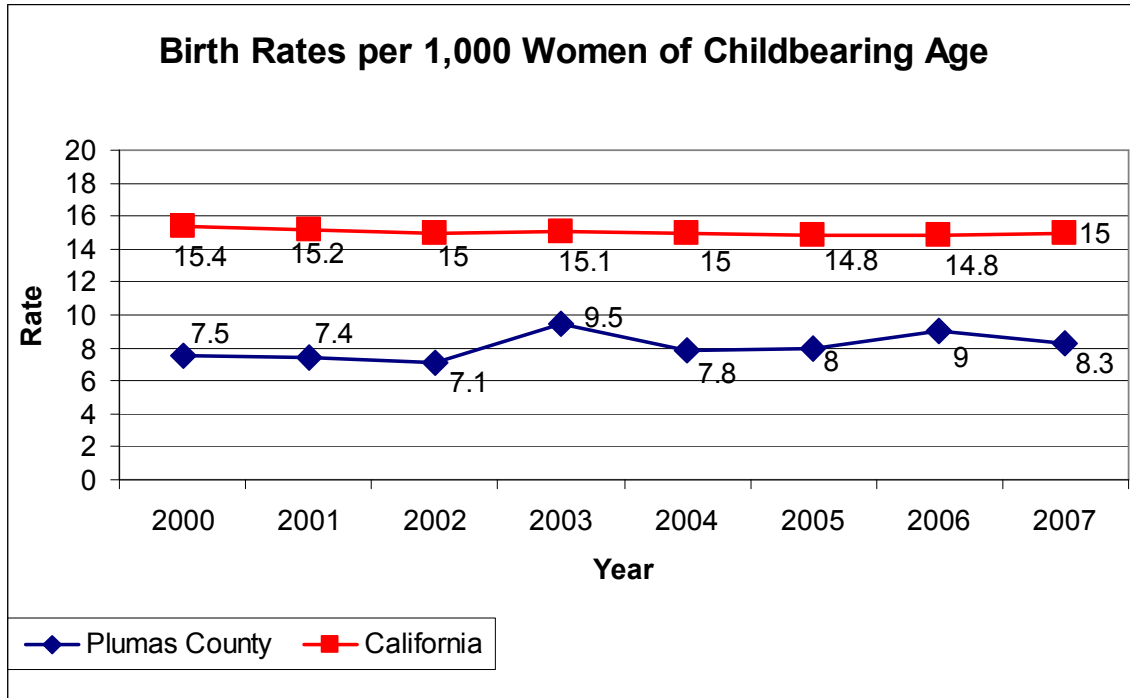
### POPULATION

Plumas County covers 2,618 square miles. Plumas County is home to more than 100 lakes, 1,000 miles of rivers and streams, and 1 million acres of national forest. California’s Department of Finance estimates the county’s 2007 population at 21,100 and, by the year 2020, projects Plumas’ residency will reach almost 23,000 persons (Plumas County Snapshot, California Employment Development Department).

The population of Plumas County contains more adults proportionately over the age of 45 than the state as a whole and fewer individuals between the ages of 14 and 40. The chart below shows the age distribution of the county compared to the state and is based on the 2000 census.



The next chart shows the birth rate to women of child bearing age. The birth rate to Plumas County women is lower than that of the state as a whole. The lower birth rate has stayed relatively constant since 2000.



Source: State of California, Department of Finance

## IMPROVED FAMILY FUNCTIONING

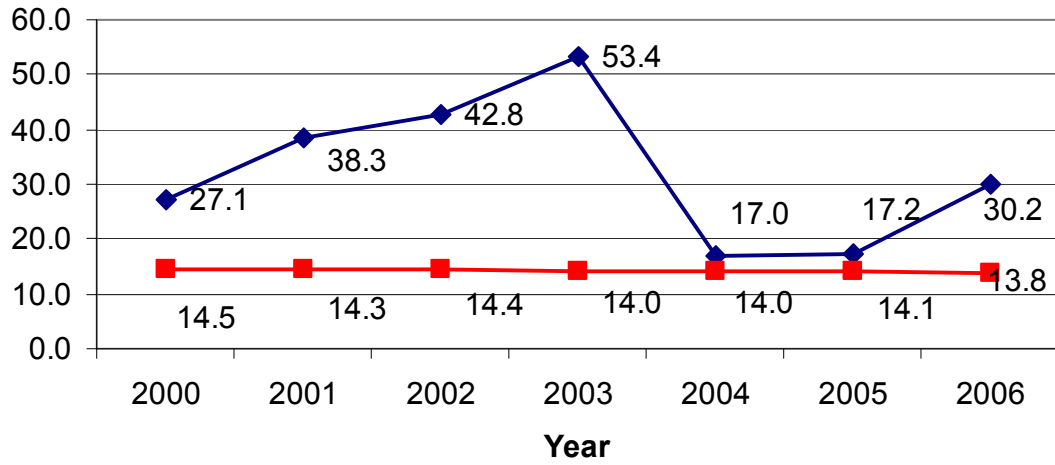
The indicators for family functioning include the rates of children with substantiated cases of abuse and neglect and the rate of children in foster care. These rates reflect children 0 to 5 in Plumas County. The estimates of total population of children 0 to 5 come from the California Department of Finance.<sup>1</sup>

The rate of substantiated abuse per 1,000 children 0 to 5 is shown first, followed by the rate of children in foster care who are 0 to 5. The rate of children in foster care is based on a snapshot taken in July of each year.<sup>2</sup>

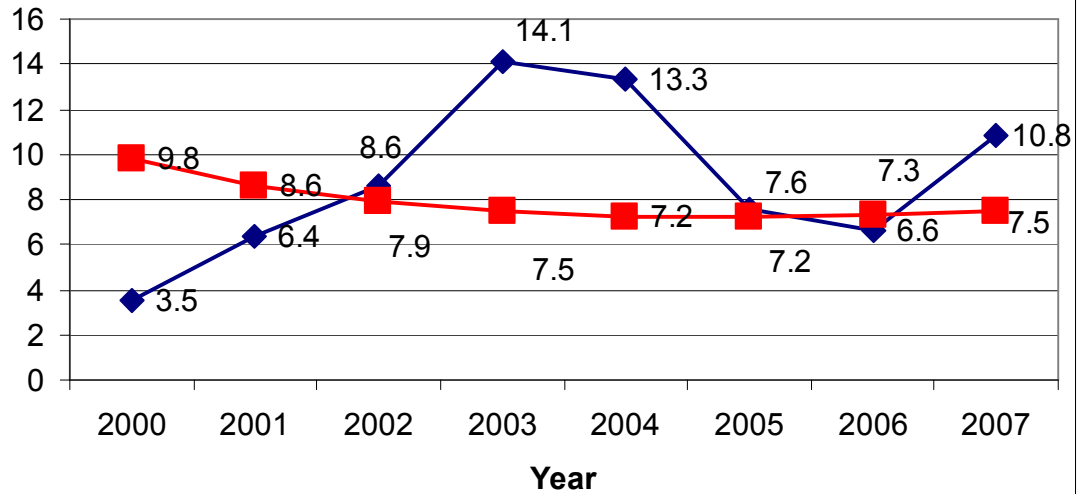
<sup>1</sup> Source: Center for Social Services Research, School of Social Welfare, U.C. Berkeley, CWS/CMS, Dynamic Report System Referral & Substantiation Rates Based on an unduplicated count of entries during time period.

<sup>2</sup> Data Source: Source: Center for Social Services Research, School of Social Welfare, U.C. Berkeley: CWS/CMS 2006 Quarter 2 Extract.

### Substantiated Cases of Abuse or Neglect per 1,000 Children Ages 0-5



### Rates of Children in Foster Care per 1,000 Children Ages 0-5



## IMPROVED CHILD HEALTH

The indicators for child health range from access to prenatal care to children entering Kindergarten fully immunized.

- Access to prenatal care:
  - Women entering care in the first trimester, second trimester and third trimester<sup>3</sup>
- Birthweight of infants
  - Percent low birthweight infants<sup>4</sup>
  - Number of low birthweight infants in Plumas County<sup>5</sup>
- Births to teen mothers
  - Teen births: proportion of live births to mothers 15 to 17<sup>6</sup>
  - Teen births: proportion of live births to mothers 18 to 19<sup>7</sup>
  - Number of births to teens
- Women breastfeeding at discharge from hospital<sup>8</sup>
  - Any breastfeeding and exclusive breastfeeding
- Children entering Kindergarten fully immunized<sup>9</sup>

---

<sup>3</sup> Source: State of California, Department of Public Health, Birth Records.

<sup>4</sup> Source: data from State of California, Department of Public Health, Birth Records Table 2-27. Live Births By Birthweight, California Counties And Selected City Health Departments, 2005 (By Place Of Residence)

<sup>5</sup> Source: State of California, Department of Public Health, Birth Records Table 2-20. Number And Percent Of Low Birthweight Births, California Counties, 1996-2005 (By Place Of Residence)

<sup>6</sup> Source: State of California, Department of Public Health, Birth Records Table 2-21, Number And Percent Of Live Births To Teen Mothers, California Counties, 1996-2005 (By Place of Residence)

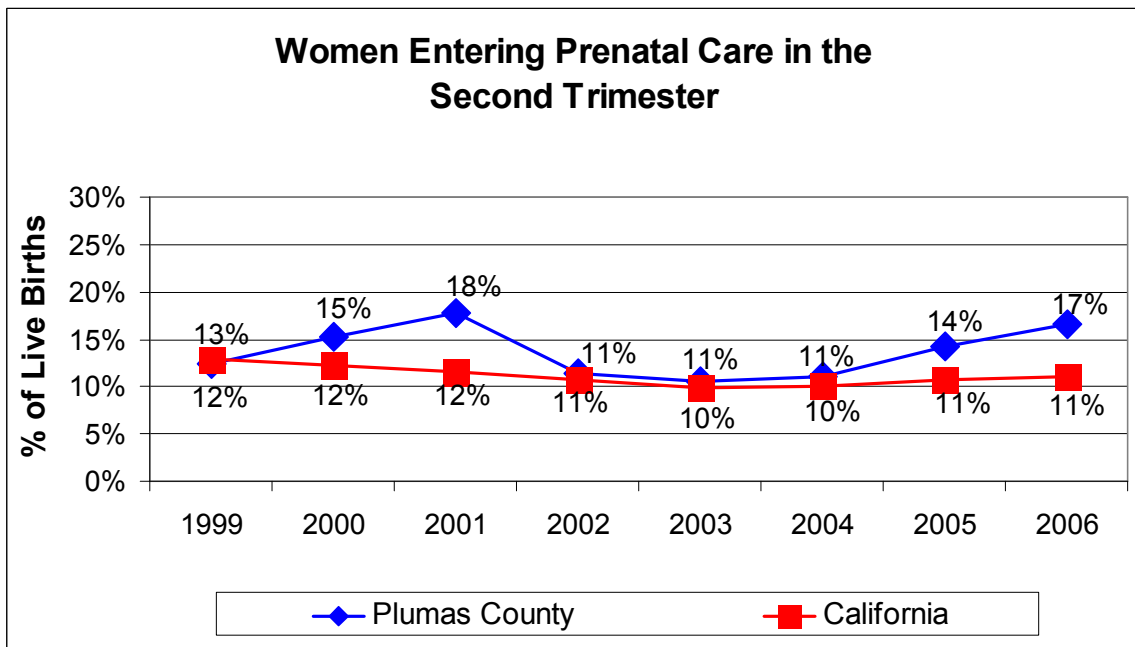
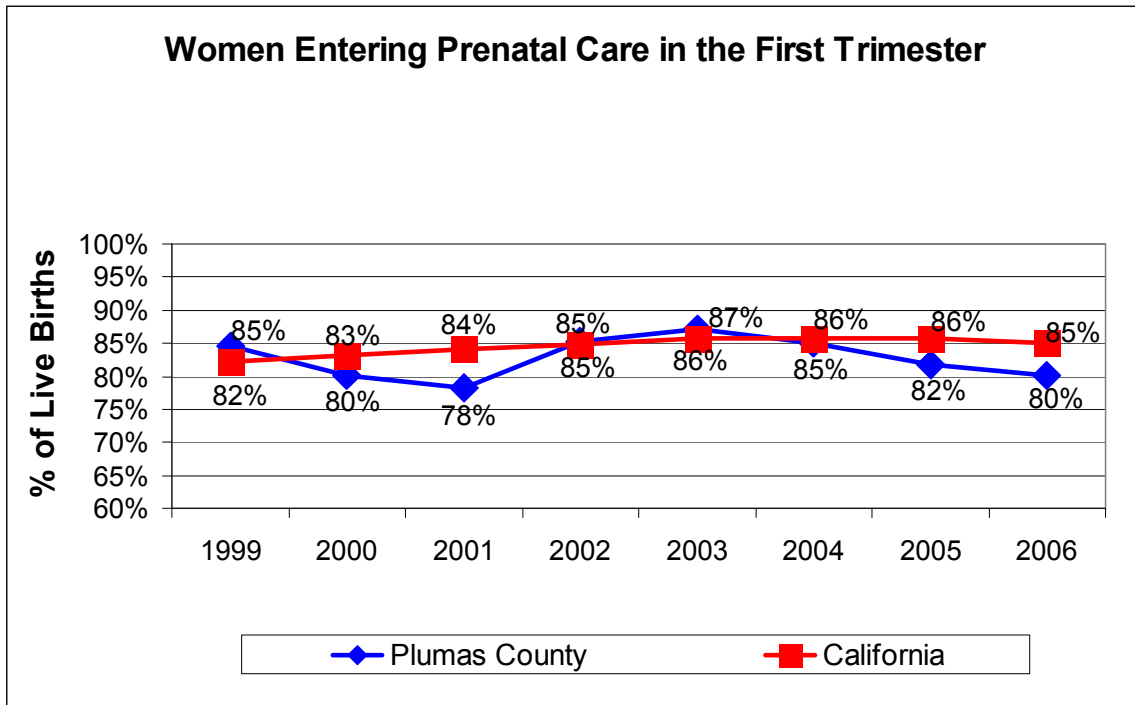
<sup>7</sup> Source: 2005 data from State of California, Department of Public Health, Birth Records. Table 2-29. Live Births By Age Of Mother (Detailed Under Age 20), California Counties And Selected City Health Departments, 2005 (By place of Residence)

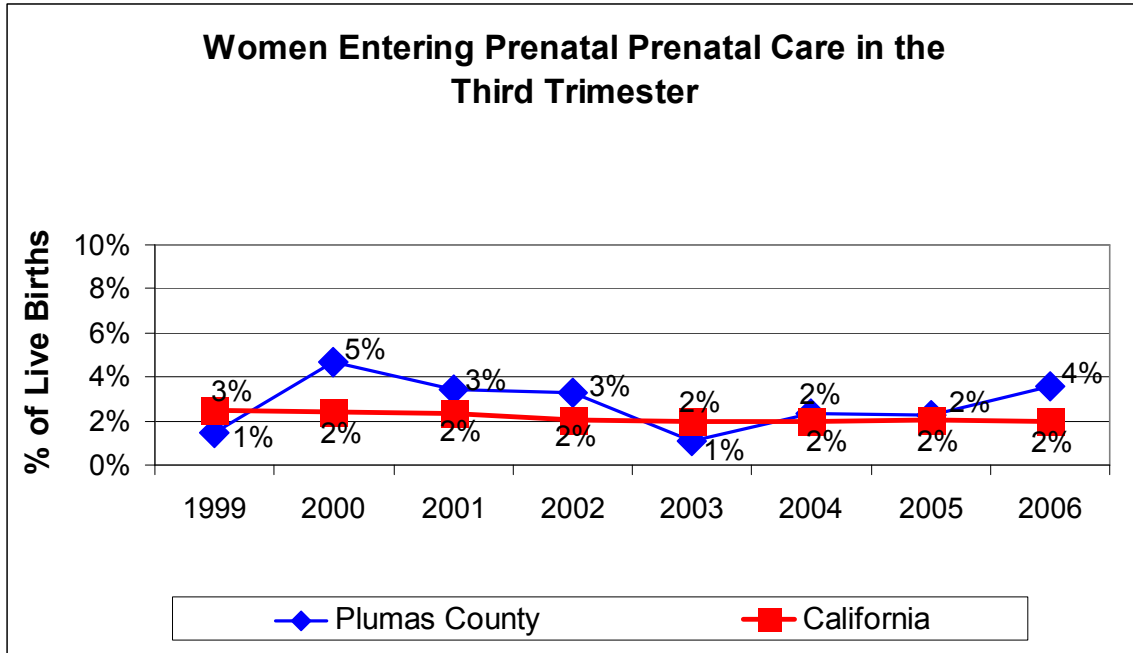
<sup>8</sup> Source: Genetic Disease Screening Program, Newborn Screening Data, 2004-2006

Prepared by: Maternal, Child and Adolescent Health Program

<sup>9</sup> Source: California Department of Health Services, Immunization Branch. Kindergarten Assessment Results

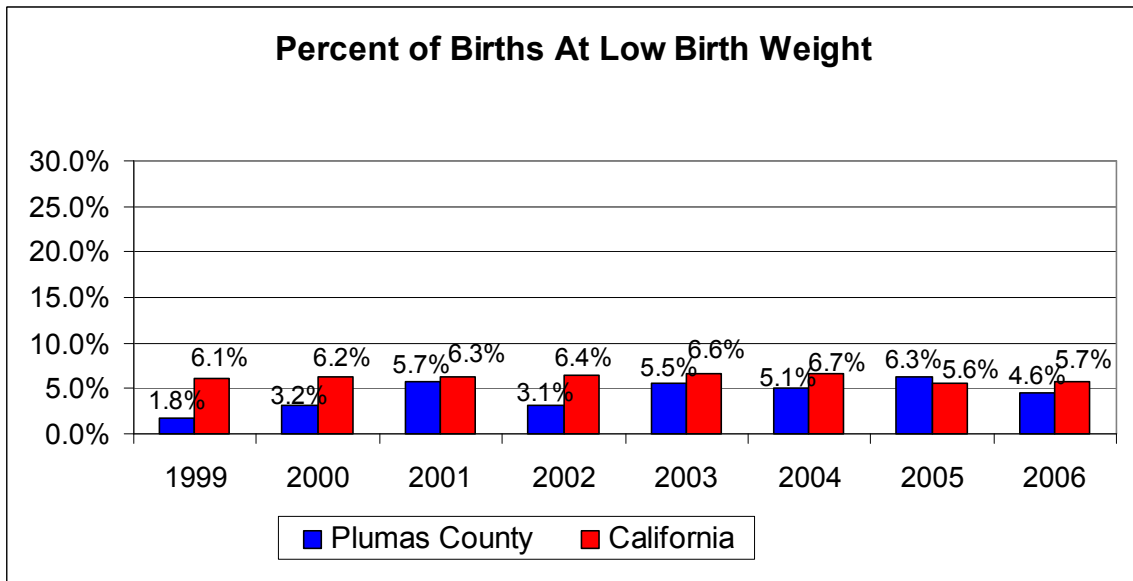
**INDICATOR: BIRTHS BY TRIMESTER PRENATAL CARE BEGAN**

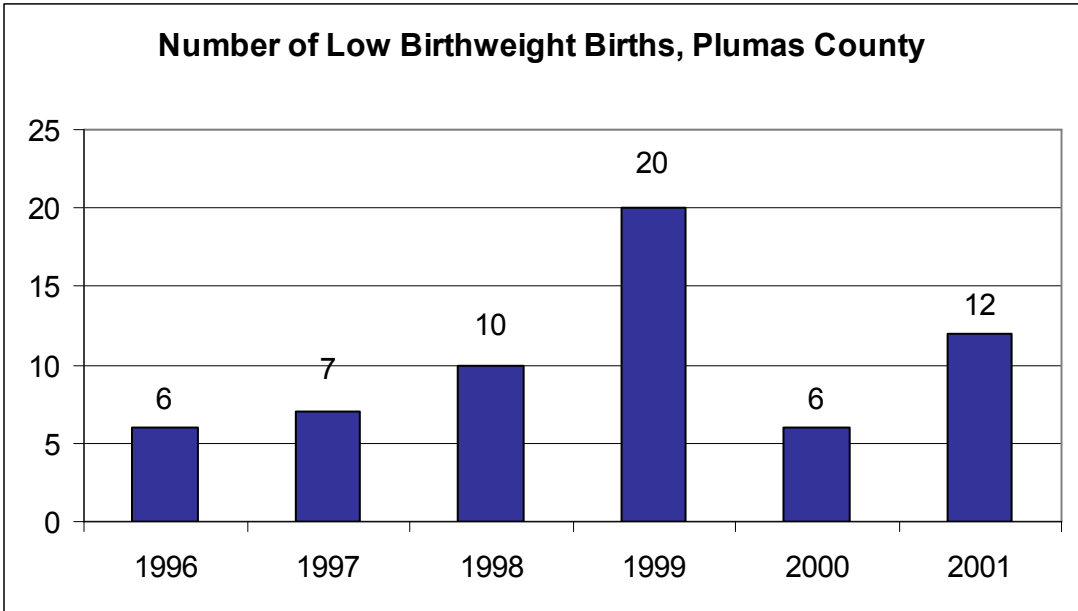




**INDICATOR: BIRTH WEIGHT**

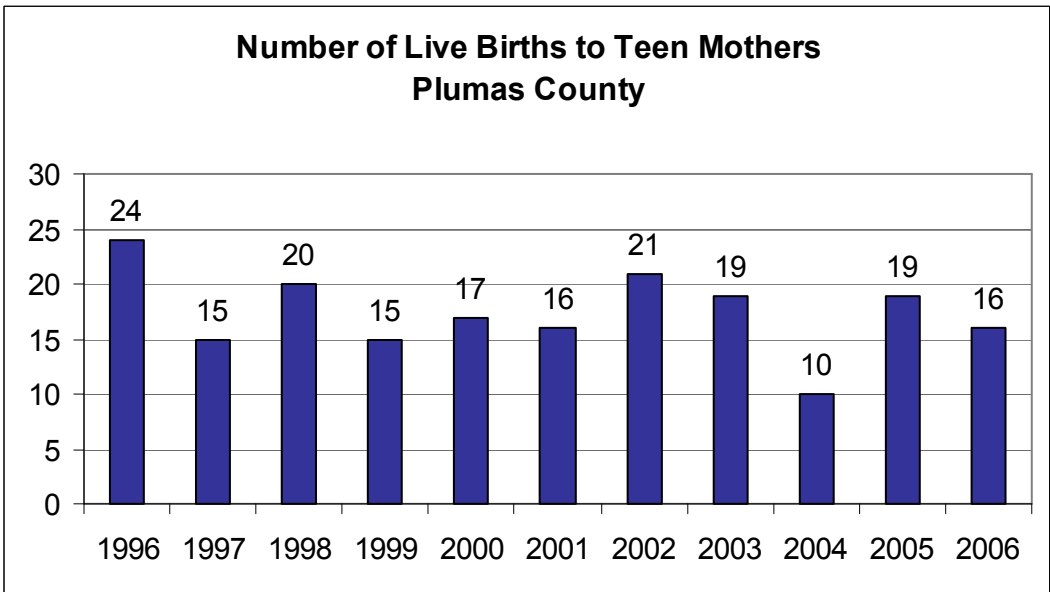
The number and percent of births of low birth weight infants is relatively small in Plumas County.



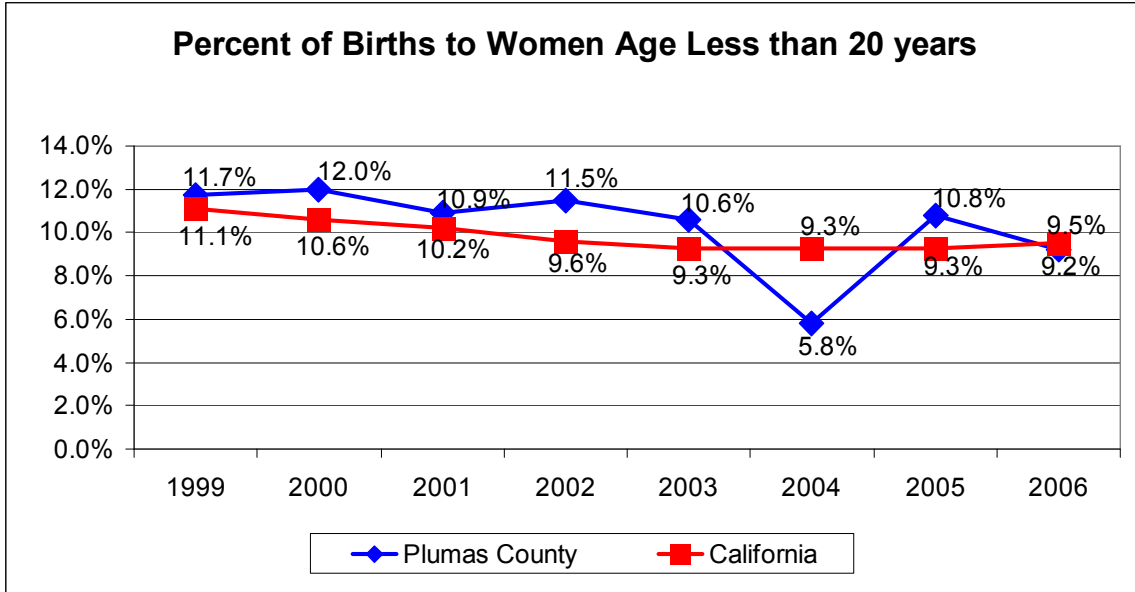


**INDICATOR: BIRTHS TO TEEN MOTHERS**

There are relatively few births to mothers under 20 in Plumas County. The proportion of birth to teens mirrors that of the state as a whole.

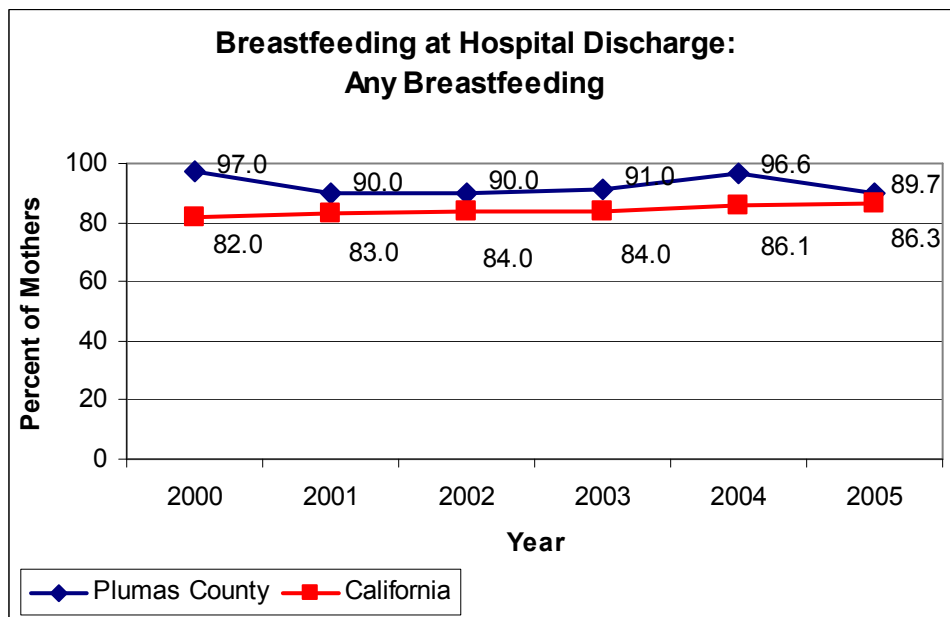




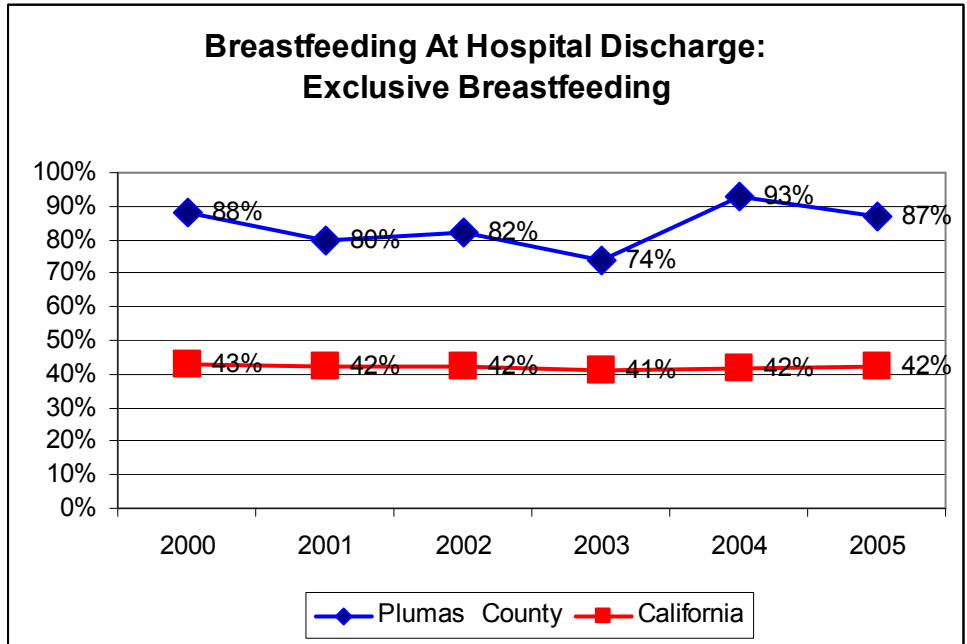


## INDICATOR: BREASTFEEDING

Plumas County mothers report breastfeeding at a high rate upon discharge from the hospital compared to the state average. The two charts below show the proportion of mothers doing any breastfeeding and the proportion doing exclusive breastfeeding at hospital discharge.<sup>10</sup>

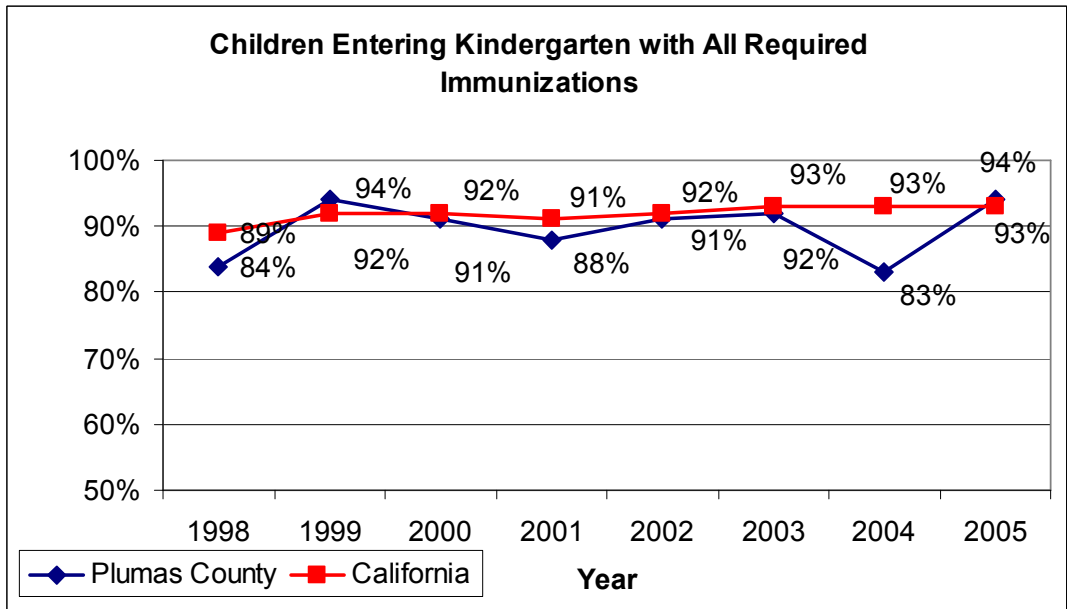


<sup>10</sup> Source: California Department of Public Health, Genetic Disease Screening Program, Newborn Screening Data, 2005, Maternal Child and Adolescent Health Program Produced September 2007. 4/9/2008



**INDICATOR: CHILDREN ENTERING KINDERGARTEN FULLY IMMUNIZED**

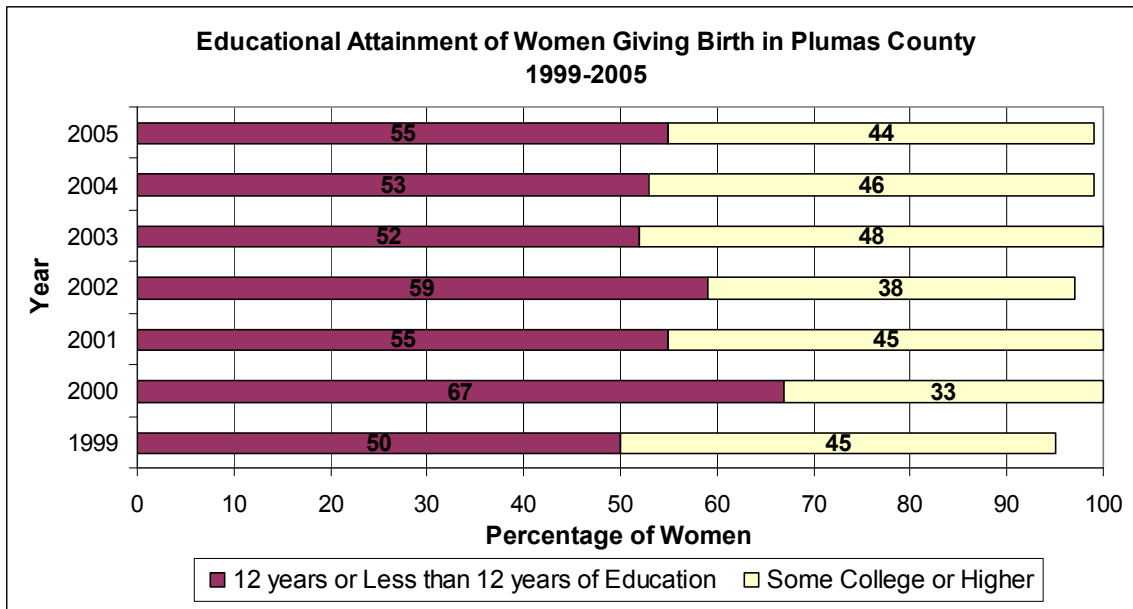
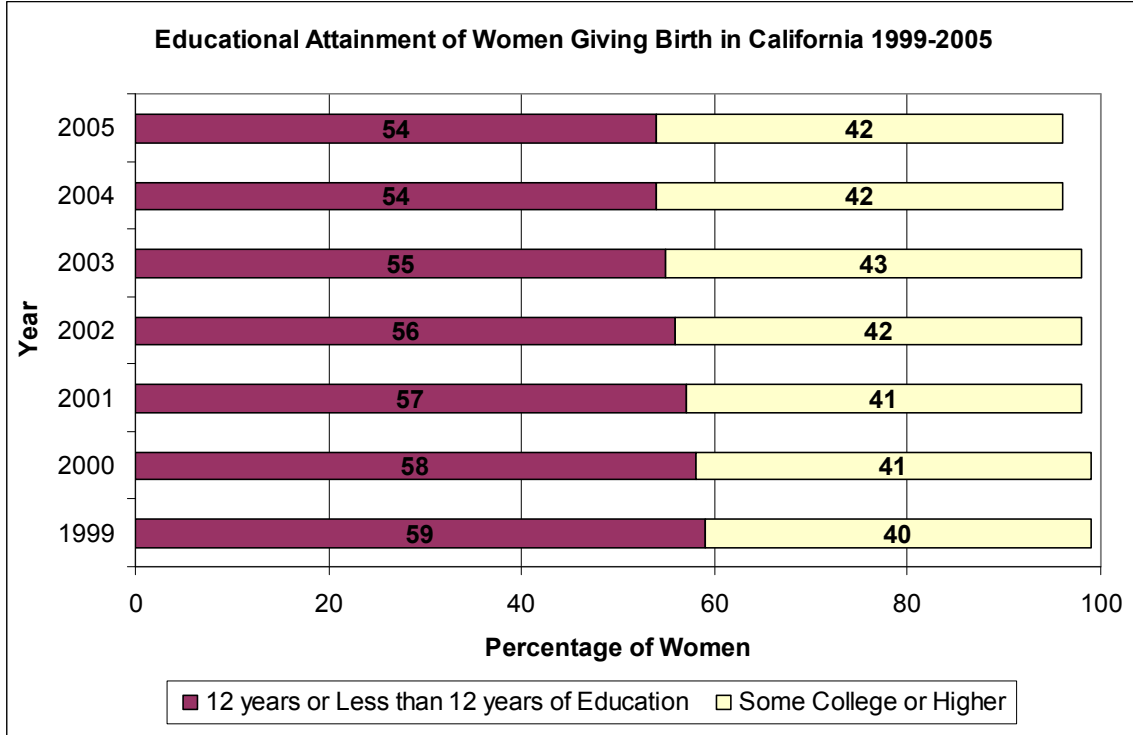
Most children are fully immunized at the time they enter Kindergarten in Plumas County.<sup>11</sup>



<sup>11</sup> California Department of Health Services Immunization Branch, Kindergarten Assessment Results, 2006, and Table 3.16 Estimated vaccination coverage with all required immunizations among children ages 4-6 years in kindergarten by county, Kindergarten immunization Assessment California, 2000-2005 school years.

## INDICATOR: LITERACY AND EDUCATION OF WOMEN GIVING BIRTH

The education level of women giving birth is gathered via birth certificates. The first chart shows the proportion of women having no education, 12 years or less than 12 years of education, and some college in the state as a whole, followed by Plumas County.<sup>12</sup>



<sup>12</sup> State of California, Department of Public Health, Birth Records. TABLE 2-36. Live Births by Mother's Education, California Counties And Selected City Health Departments, 2004; 2005. (By Place of Residence)

## IMPROVED CHILD DEVELOPMENT

The indicators for improved child development include:

- Demand for child care parents with children under 13 in the labor force<sup>13</sup>
- Number of licensed child care sites in Plumas County<sup>14</sup>
- Number of slots in licensed child care facilities<sup>15</sup>
- Number of children with special needs<sup>16</sup>

There were an estimated 1,582 parents in the labor force with children in Plumas County in 2006. The total number of child care slots totaled 747 which was far less than the number of parents who need child care.

---

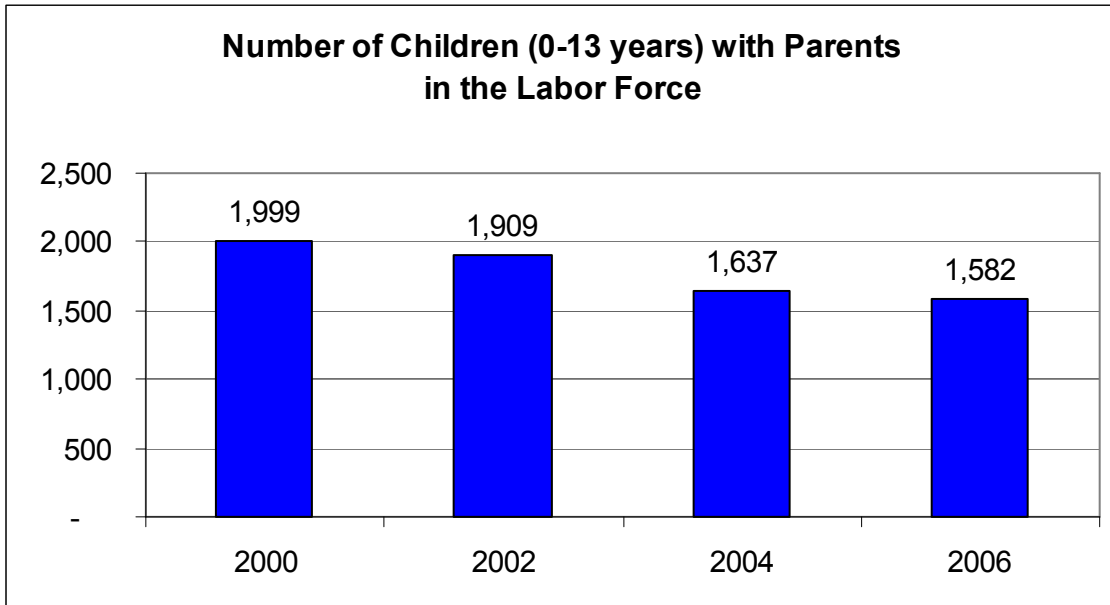
<sup>13</sup> Source: The California Child Care Resource & Referral Network, The California Child Care Portfolio

<sup>14</sup> Source: The California Child Care Resource & Referral Network, The California Child Care Portfolio

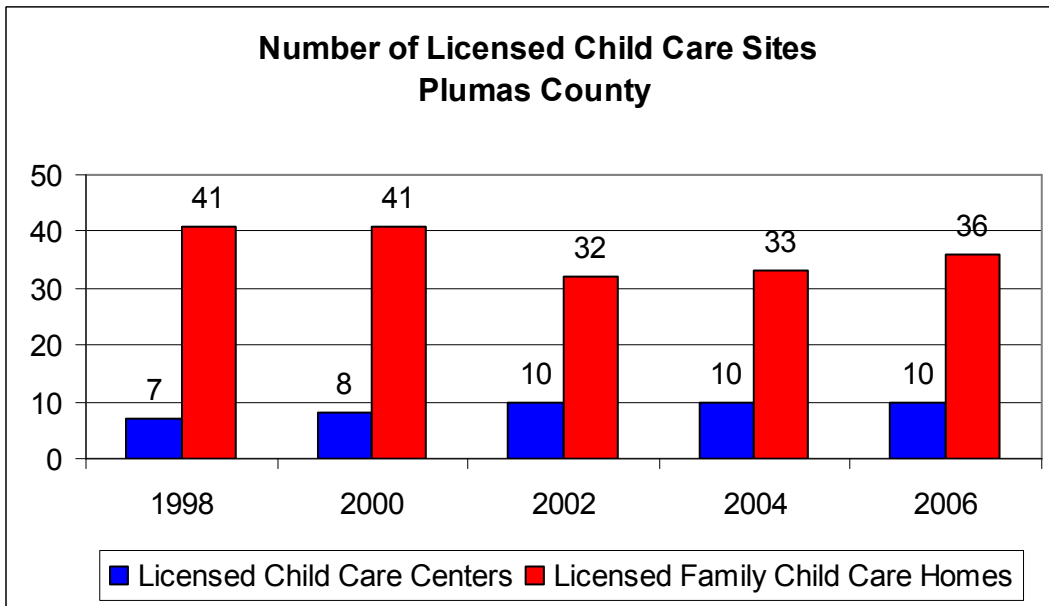
<sup>15</sup> Source: The California Child Care Resource & Referral Network, The California Child Care Portfolio; data for 2007 provided by Plumas Rural Services.

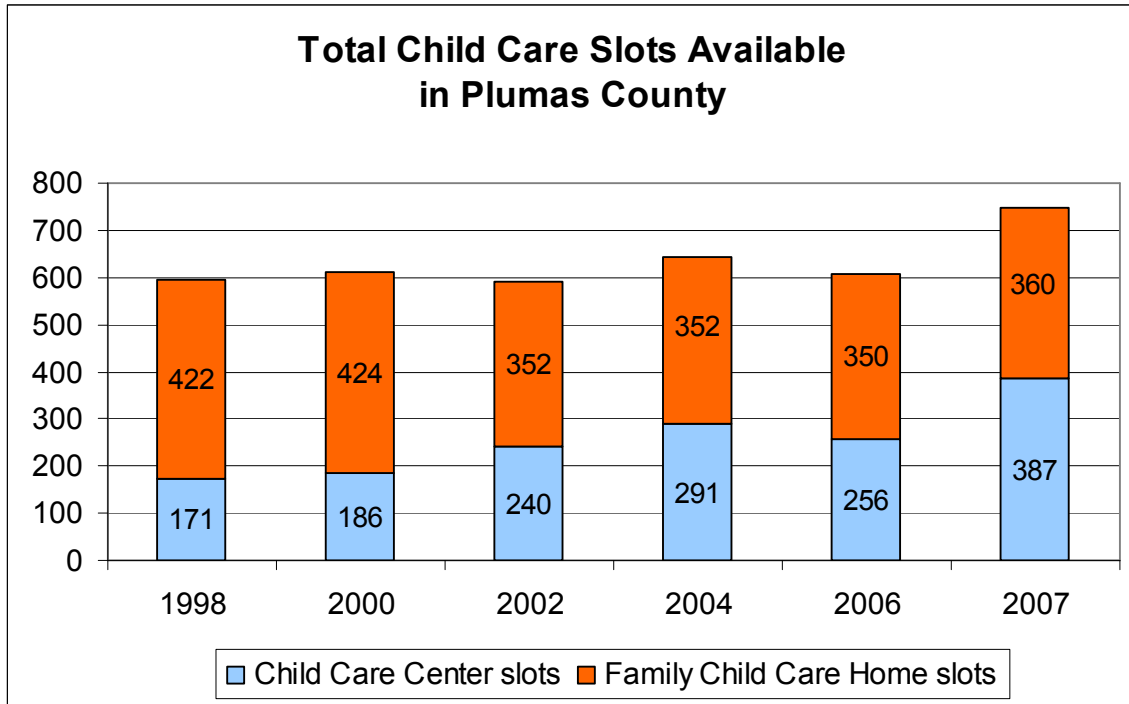
<sup>16</sup> Source: California Department of Education, Special Education Division, Enrollment by Age and Disability

**INDICATOR: DEMAND FOR CHILD CARE**



**INDICATOR: SUPPLY OF CHILD CARE**





**INDICATOR: SPECIAL NEEDS CHILDREN**

